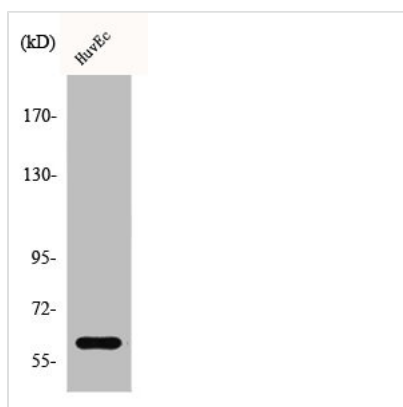




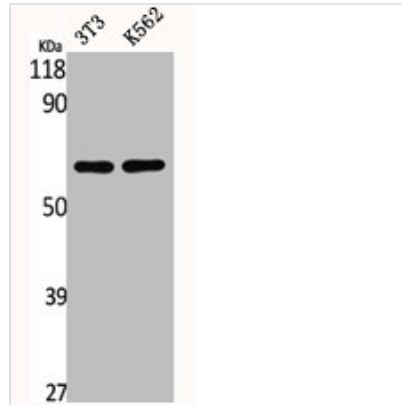
CSRNP2 Antibody

Product Code	CSB-PA001810
Storage	Upon receipt, store at -20°C or -80°C. Avoid repeated freeze.
Uniprot No.	Q9H175
Immunogen	Synthesized peptide derived from the Internal region of Human CSRNP2.
Raised In	Rabbit
Species Reactivity	Human, Mouse, Rat
Tested Applications	WB, IHC, ELISA; WB:1:500-1:2000, IHC:1:100-1:300, ELISA:1:20000
Form	Liquid
Conjugate	Non-conjugated
Storage Buffer	Liquid in PBS containing 50% glycerol, 0.5% BSA and 0.02% sodium azide.
Purification Method	The antibody was affinity-purified from rabbit antiserum by affinity-chromatography using epitope-specific immunogen.
Isotype	IgG
Alias	CSRNP2; C12orf22; FAM130A1; TAIP12; Cysteine/serine-rich nuclear protein 2; CSRNP-2; Protein FAM130A1; TGF-beta-induced apoptosis protein 12; TAIP-12
Immunogen Species	Homo sapiens (Human)
Target Names	CSRNP2

Image



Western Blot analysis of A549 cells using CSRNP2 Polyclonal Antibody



Western Blot analysis of NIH-3T3 K562 cells using CSRNP2 Polyclonal Antibody

Usage

For Research Use Only. Not for use in diagnostic or therapeutic procedures.