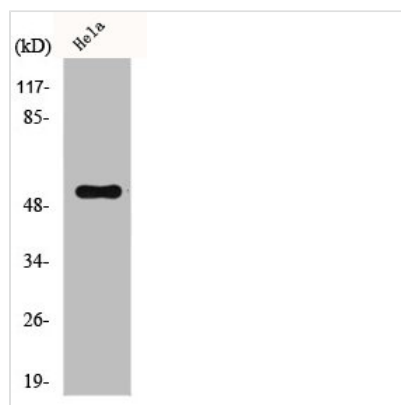




CELF1 Antibody

Product Code	CSB-PA001829
Storage	Upon receipt, store at -20°C or -80°C. Avoid repeated freeze.
Uniprot No.	Q92879
Immunogen	Synthesized peptide derived from the Internal region of Human CUG-BP1.
Raised In	Rabbit
Species Reactivity	Human,Mouse,Rat
Tested Applications	WB, IHC, ELISA; WB:1:500-1:2000, IHC:1:100-1:300, ELISA:1:40000
Form	Liquid
Conjugate	Non-conjugated
Storage Buffer	Liquid in PBS containing 50% glycerol, 0.5% BSA and 0.02% sodium azide.
Purification Method	The antibody was affinity-purified from rabbit antiserum by affinity-chromatography using epitope-specific immunogen.
Isotype	IgG
Alias	CELF1; BRUNOL2; CUGBP; CUGBP1; NAB50; CUGBP Elav-like family member 1; CELF-1; 50 kDa nuclear polyadenylated RNA-binding protein; Bruno-like protein 2; CUG triplet repeat RNA-binding protein 1; CUG-BP1; CUG-BP- and ETR-3-like factor 1; Dead
Immunogen Species	Homo sapiens (Human)
Target Names	CELF1

Image



Western Blot analysis of HepG2 cells using CUG-BP1 Polyclonal Antibody

Usage

For Research Use Only. Not for use in diagnostic or therapeutic procedures.