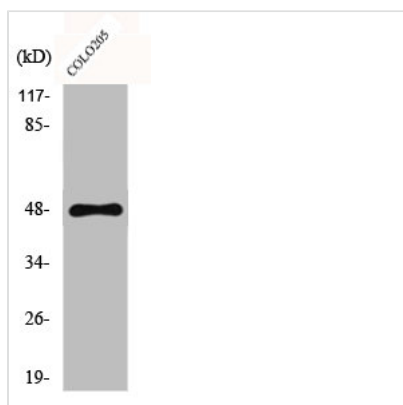




CYP11B1/CYP11B2 Antibody

Product Code	CSB-PA001924
Storage	Upon receipt, store at -20°C or -80°C. Avoid repeated freeze.
Uniprot No.	P15538/P19099
Immunogen	Synthesized peptide derived from the C-terminal region of Human CYP11B1/2.
Raised In	Rabbit
Species Reactivity	Human
Tested Applications	WB, ELISA; WB:1:500-1:2000, ELISA:1:40000
Form	Liquid
Conjugate	Non-conjugated
Storage Buffer	Liquid in PBS containing 50% glycerol, 0.5% BSA and 0.02% sodium azide.
Purification Method	The antibody was affinity-purified from rabbit antiserum by affinity-chromatography using epitope-specific immunogen.
Isotype	IgG
Alias	CYP11B1; S11BH; Cytochrome P450 11B1; mitochondrial; CYPXIB1; Cytochrome P-450c11; Cytochrome P450C11; Steroid 11-beta-hydroxylase; CYP11B2; Cytochrome P450 11B2, mitochondrial; Aldosterone synthase; ALDOS; Aldosterone-synthesizing enzyme;
Immunogen Species	Homo sapiens (Human)
Target Names	CYP11B1/CYP11B2

Image



Western Blot analysis of COLO205 cells using CYP11B1/2 Polyclonal Antibody

Usage

For Research Use Only. Not for use in diagnostic or therapeutic procedures.