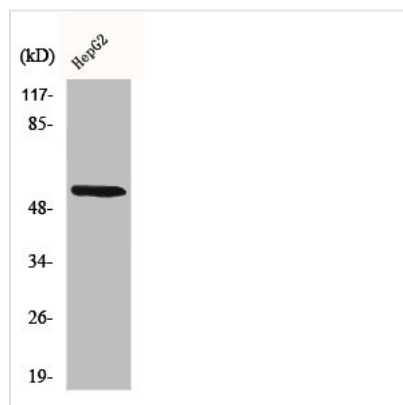




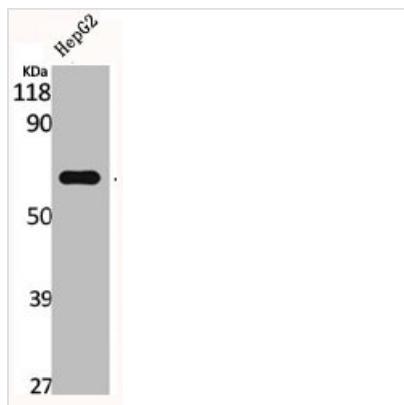
CYP26A1 Antibody

Product Code	CSB-PA001937
Storage	Upon receipt, store at -20°C or -80°C. Avoid repeated freeze.
Uniprot No.	O43174
Immunogen	Synthesized peptide derived from the Internal region of Human CYP26A1.
Raised In	Rabbit
Species Reactivity	Human,Mouse,Rat
Tested Applications	WB, IF, ELISA; WB:1:500-1:2000, IF:1:200-1:1000, ELISA:1:20000
Form	Liquid
Conjugate	Non-conjugated
Storage Buffer	Liquid in PBS containing 50% glycerol, 0.5% BSA and 0.02% sodium azide.
Purification Method	The antibody was affinity-purified from rabbit antiserum by affinity-chromatography using epitope-specific immunogen.
Isotype	IgG
Alias	CYP26A1; CYP26; P450RAI1; Cytochrome P450 26A1; Cytochrome P450 retinoic acid-inactivating 1; Cytochrome P450RAI; hP450RAI; Retinoic acid 4-hydroxylase; Retinoic acid-metabolizing cytochrome
Immunogen Species	Homo sapiens (Human)
Target Names	CYP26A1

Image



Western Blot analysis of 293 cells using CYP26A1 Polyclonal Antibody



Western Blot analysis of HepG2 cells using CYP26A1 Polyclonal Antibody

Usage

For Research Use Only. Not for use in diagnostic or therapeutic procedures.