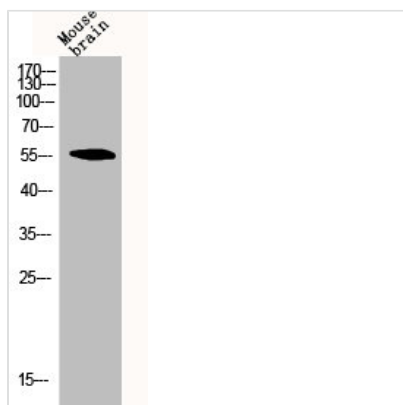




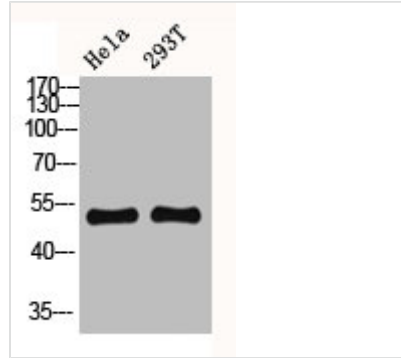
CYP2C19 Antibody

Product Code	CSB-PA001958
Storage	Upon receipt, store at -20°C or -80°C. Avoid repeated freeze.
Uniprot No.	P33261
Immunogen	Synthesized peptide derived from the Internal region of Human CYP2C19.
Raised In	Rabbit
Species Reactivity	Human
Tested Applications	WB, IHC, IF, ELISA; WB:1:500-1:2000, IHC:1:100-1:300, IF:1:200-1:1000, ELISA:1:5000
Form	Liquid
Conjugate	Non-conjugated
Storage Buffer	Liquid in PBS containing 50% glycerol, 0.5% BSA and 0.02% sodium azide.
Purification Method	The antibody was affinity-purified from rabbit antiserum by affinity-chromatography using epitope-specific immunogen.
Isotype	IgG
Alias	CYP2C19; Cytochrome P450 2C19; (R)-limonene 6-monooxygenase; (S)-limonene 6-monooxygenase; (S)-limonene 7-monooxygenase; CYP11C17; CYP11C19; Cytochrome P450-11A; Cytochrome P450-254C; Mephenytoin 4-hydroxylase
Immunogen Species	Homo sapiens (Human)
Target Names	CYP2C19

Image



Western Blot analysis of MOUSE-BRAIN cells using CYP2C19 Polyclonal Antibody



Western Blot analysis of HELA 293T cells using CYP2C19 Polyclonal Antibody

Usage

For Research Use Only. Not for use in diagnostic or therapeutic procedures.