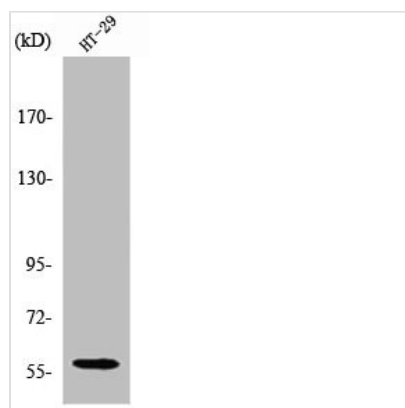




CYP2J2 Antibody

Product Code	CSB-PA001968
Storage	Upon receipt, store at -20°C or -80°C. Avoid repeated freeze.
Uniprot No.	P51589
Immunogen	Synthesized peptide derived from the Internal region of Human CYP2J2.
Raised In	Rabbit
Species Reactivity	Human,Monkey
Tested Applications	WB, IHC, IF, ELISA; WB:1:500-1:2000, IHC:1:100-1:300, IF:1:200-1:1000, ELISA:1:10000
Form	Liquid
Conjugate	Non-conjugated
Storage Buffer	Liquid in PBS containing 50% glycerol, 0.5% BSA and 0.02% sodium azide.
Purification Method	The antibody was affinity-purified from rabbit antiserum by affinity-chromatography using epitope-specific immunogen.
Isotype	IgG
Alias	Arachidonic acid epoxygenase antibody; CP2J2_HUMAN antibody; CPJ2 antibody; CYP2J2 antibody; CYP11J2 antibody; Cytochrome P450 2J2 antibody; Cytochrome P450 family 2 subfamily J polypeptide 2 antibody; Cytochrome P450 subfamily IIJ (arachidonic acid epoxygenase) polypeptide 2 antibody; Cytochrome P450 subfamily IIJ polypeptide 2 antibody; Flavoprotein linked monooxygenase antibody; Microsomal monooxygenase antibody; OTTHUMP00000010550 antibody
Immunogen Species	Homo sapiens (Human)
Target Names	CYP2J2

Image



Western Blot analysis of various cells using CYP2J2 Polyclonal Antibody

Usage For Research Use Only. Not for use in diagnostic or therapeutic procedures.