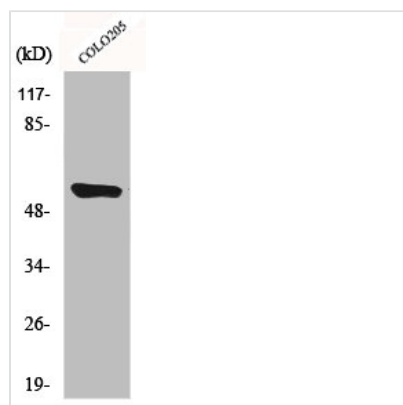




# CYP4A11/CYP4A22 Antibody

<b>Product Code</b>	CSB-PA001979
<b>Storage</b>	Upon receipt, store at -20°C or -80°C. Avoid repeated freeze.
<b>Uniprot No.</b>	Q02928/Q5TCH4
<b>Immunogen</b>	Synthesized peptide derived from the Internal region of Human CYP4A11/22.
<b>Raised In</b>	Rabbit
<b>Species Reactivity</b>	Human
<b>Tested Applications</b>	WB, ELISA; WB:1:500-1:2000, ELISA:1:40000
<b>Form</b>	Liquid
<b>Conjugate</b>	Non-conjugated
<b>Storage Buffer</b>	Liquid in PBS containing 50% glycerol, 0.5% BSA and 0.02% sodium azide.
<b>Purification Method</b>	The antibody was affinity-purified from rabbit antiserum by affinity-chromatography using epitope-specific immunogen.
<b>Isotype</b>	IgG
<b>Alias</b>	CYP4A11; CYP4A2; Cytochrome P450 4A11; 20-hydroxyeicosatetraenoic acid synthase; 20-HETE synthase; CYP4AII; CYPIVA11; Cytochrome P-450HK-omega; Cytochrome P450HL-omega; Fatty acid omega-hydroxylase; Lauric acid omega-hydroxylase; CYP4A22; C
<b>Immunogen Species</b>	Homo sapiens (Human)
<b>Target Names</b>	CYP4A11/CYP4A22

## Image



Western Blot analysis of HeLa cells using CYP4A11/22 Polyclonal Antibody