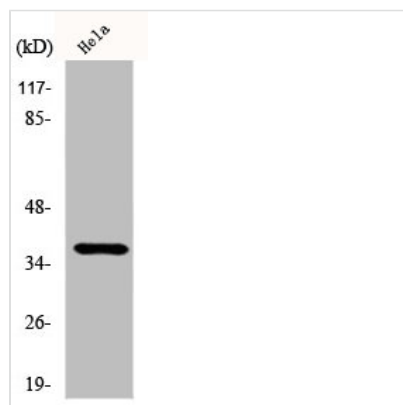




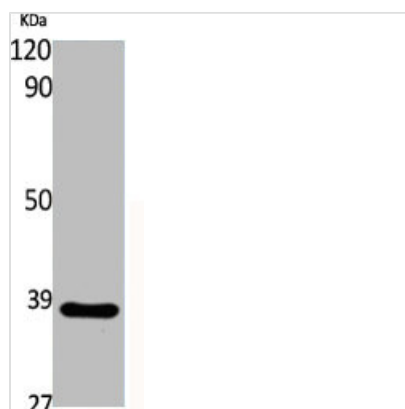
CYSLTR2 Antibody

Product Code	CSB-PA001993
Storage	Upon receipt, store at -20°C or -80°C. Avoid repeated freeze.
Uniprot No.	Q9NS75
Immunogen	Synthesized peptide derived from the C-terminal region of Human CysLTR2.
Raised In	Rabbit
Species Reactivity	Human
Tested Applications	WB, IF, ELISA; WB:1:500-1:2000, IF:1:200-1:1000, ELISA:1:40000
Form	Liquid
Conjugate	Non-conjugated
Storage Buffer	Liquid in PBS containing 50% glycerol, 0.5% BSA and 0.02% sodium azide.
Purification Method	The antibody was affinity-purified from rabbit antiserum by affinity-chromatography using epitope-specific immunogen.
Isotype	IgG
Alias	CYSLTR2; CYSLT2; CYSLT2R; PSEC0146; Cysteinyl leukotriene receptor 2; CysLTR2; G-protein coupled receptor GPCR21; hGPCR21; G-protein coupled receptor HG57; HPN321
Immunogen Species	Homo sapiens (Human)
Target Names	CYSLTR2

Image



Western Blot analysis of HeLa cells using CysLTR2 Polyclonal Antibody



Western Blot analysis of various cells using
CysLTR2 Polyclonal Antibody