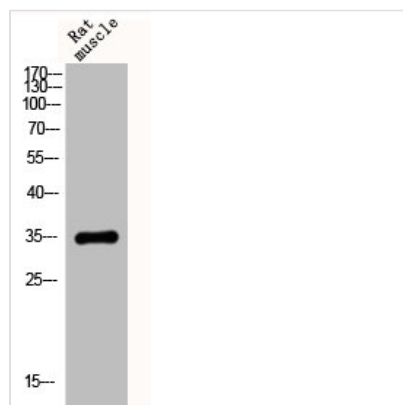




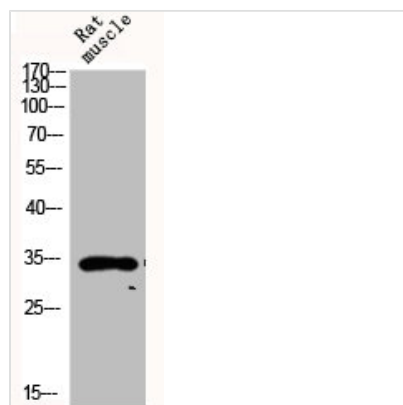
CYC1 Antibody

Product Code	CSB-PA002014
Storage	Upon receipt, store at -20°C or -80°C. Avoid repeated freeze.
Uniprot No.	P08574
Immunogen	Synthesized peptide derived from the Internal region of Human Cytochrome c1.
Raised In	Rabbit
Species Reactivity	Human, Mouse
Tested Applications	WB, ELISA; WB:1:500-1:2000, ELISA:1:20000
Form	Liquid
Conjugate	Non-conjugated
Storage Buffer	Liquid in PBS containing 50% glycerol, 0.5% BSA and 0.02% sodium azide.
Purification Method	The antibody was affinity-purified from rabbit antiserum by affinity-chromatography using epitope-specific immunogen.
Isotype	IgG
Alias	CYC1; Cytochrome c1; heme protein, mitochondrial; Complex III subunit 4; Complex III subunit IV; Cytochrome b-c1 complex subunit 4; Ubiquinol-cytochrome-c reductase complex cytochrome c1 subunit; Cytochrome c-1
Immunogen Species	Homo sapiens (Human)
Target Names	CYC1

Image



Western Blot analysis of rat-muscle cells using Cytochrome c1 Polyclonal Antibody



Western Blot analysis of RAT-MUCLE cells
using Cytochrome c1 Polyclonal Antibody