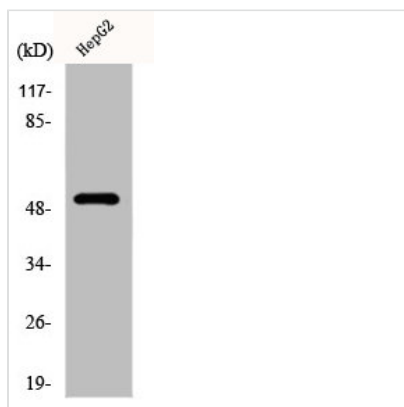




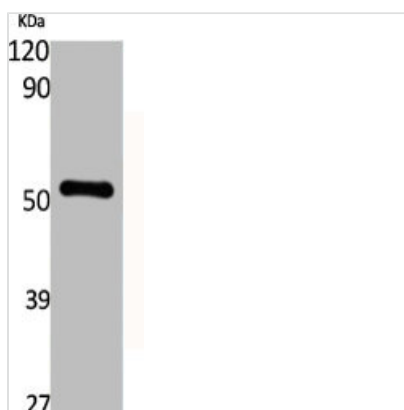
KRT13 Antibody

Product Code	CSB-PA002017
Storage	Upon receipt, store at -20°C or -80°C. Avoid repeated freeze.
Uniprot No.	P13646
Immunogen	Synthesized peptide derived from the Internal region of Human Cytokeratin 13.
Raised In	Rabbit
Species Reactivity	Human, Mouse, Rat
Tested Applications	WB, IHC, ELISA; WB:1:500-1:2000, IHC:1:100-1:300, ELISA:1:5000
Form	Liquid
Conjugate	Non-conjugated
Storage Buffer	Liquid in PBS containing 50% glycerol, 0.5% BSA and 0.02% sodium azide.
Purification Method	The antibody was affinity-purified from rabbit antiserum by affinity-chromatography using epitope-specific immunogen.
Isotype	IgG
Alias	KRT13; Keratin; type I cytoskeletal 13; Cytokeratin-13; CK-13; Keratin-13; K13
Immunogen Species	Homo sapiens (Human)
Target Names	KRT13

Image



Western Blot analysis of HepG2 cells using Cytokeratin 13 Polyclonal Antibody



Western Blot analysis of various cells using Cytokeratin 13 Polyclonal Antibody



Usage

For Research Use Only. Not for use in diagnostic or therapeutic procedures.