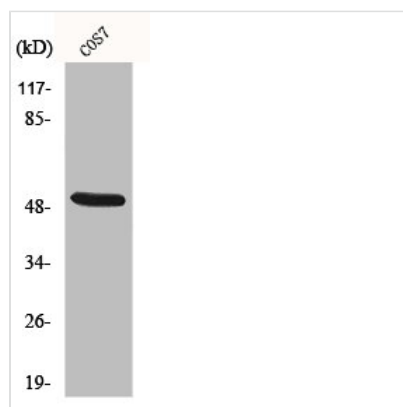




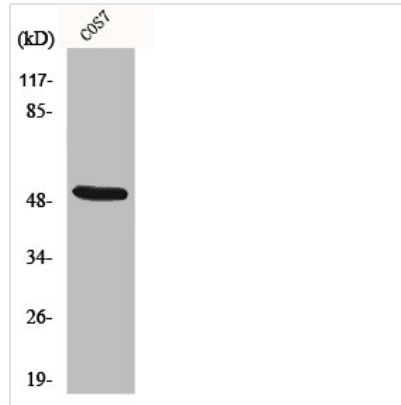
KRT15 Antibody

Product Code	CSB-PA002018
Storage	Upon receipt, store at -20°C or -80°C. Avoid repeated freeze.
Uniprot No.	P19012
Immunogen	Synthesized peptide derived from the N-terminal region of Human Cytokeratin 15.
Raised In	Rabbit
Species Reactivity	Human,Mouse,Rat,Monkey
Tested Applications	WB, IHC, ELISA; WB:1:500-1:2000, IHC:1:100-1:300, ELISA:1:20000
Form	Liquid
Conjugate	Non-conjugated
Storage Buffer	Liquid in PBS containing 50% glycerol, 0.5% BSA and 0.02% sodium azide.
Purification Method	The antibody was affinity-purified from rabbit antiserum by affinity-chromatography using epitope-specific immunogen.
Isotype	IgG
Alias	KRT15; KRTB; Keratin; type I cytoskeletal 15; Cytokeratin-15; CK-15; Keratin-15; K15
Immunogen Species	Homo sapiens (Human)
Target Names	KRT15

Image



Western Blot analysis of COS7 cells using Cytokeratin 15 Polyclonal Antibody



Western Blot analysis of COS7 cells using Cytokeratin 15 Polyclonal Antibody

Usage

For Research Use Only. Not for use in diagnostic or therapeutic procedures.