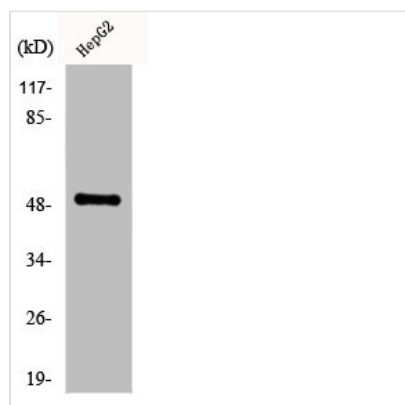




KRT16 Antibody

Product Code	CSB-PA002020
Storage	Upon receipt, store at -20°C or -80°C. Avoid repeated freeze.
Uniprot No.	P08779
Immunogen	Synthesized peptide derived from the C-terminal region of Human Cytokeratin 16.
Raised In	Rabbit
Species Reactivity	Human,Mouse,Rat
Tested Applications	WB, IHC, ELISA; WB:1:500-1:2000, IHC:1:100-1:300, ELISA:1:10000
Form	Liquid
Conjugate	Non-conjugated
Storage Buffer	Liquid in PBS containing 50% glycerol, 0.5% BSA and 0.02% sodium azide.
Purification Method	The antibody was affinity-purified from rabbit antiserum by affinity-chromatography using epitope-specific immunogen.
Isotype	IgG
Alias	KRT16; KRT16A; Keratin; type I cytoskeletal 16; Cytokeratin-16; CK-16; Keratin-16; K16
Immunogen Species	Homo sapiens (Human)
Target Names	KRT16

Image



Western Blot analysis of HepG2 cells using Cytokeratin 16 Polyclonal Antibody

Usage For Research Use Only. Not for use in diagnostic or therapeutic procedures.