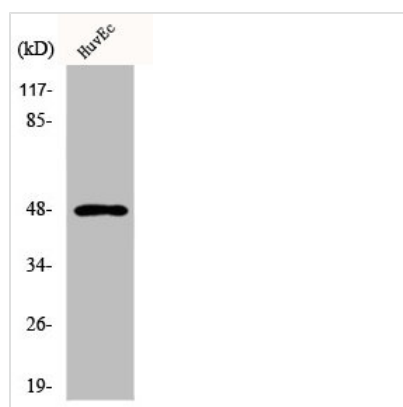




KRT17 Antibody

Product Code	CSB-PA002024
Storage	Upon receipt, store at -20°C or -80°C. Avoid repeated freeze.
Uniprot No.	Q04695
Immunogen	Synthesized peptide derived from the C-terminal region of Human Cytokeratin 17.
Raised In	Rabbit
Species Reactivity	Human,Mouse,Rat
Tested Applications	WB, IHC, IF, ELISA; WB:1:500-1:2000, IHC:1:100-1:300, IF:1:200-1:1000, ELISA:1:20000
Form	Liquid
Conjugate	Non-conjugated
Storage Buffer	Liquid in PBS containing 50% glycerol, 0.5% BSA and 0.02% sodium azide.
Purification Method	The antibody was affinity-purified from rabbit antiserum by affinity-chromatography using epitope-specific immunogen.
Isotype	IgG
Alias	KRT17; Keratin; type I cytoskeletal 17; 39.1; Cytokeratin-17; CK-17; Keratin-17; K17
Immunogen Species	Homo sapiens (Human)
Target Names	KRT17

Image



Western Blot analysis of HuvEc cells using Cytokeratin 17 Polyclonal Antibody

Usage For Research Use Only. Not for use in diagnostic or therapeutic procedures.