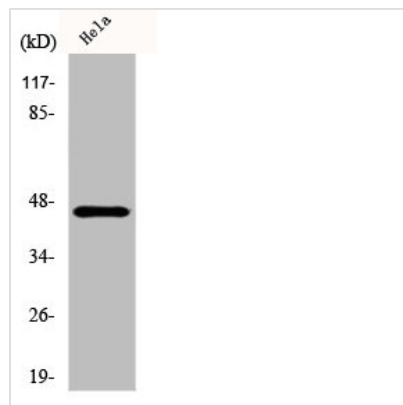




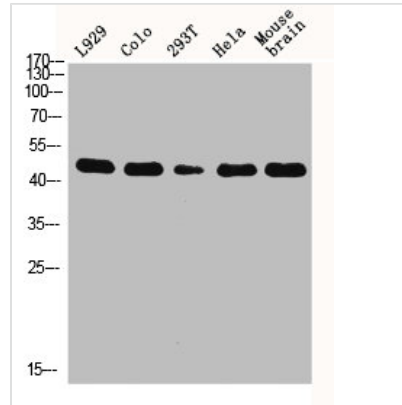
KRT18 Antibody

Product Code	CSB-PA002044
Storage	Upon receipt, store at -20°C or -80°C. Avoid repeated freeze.
Uniprot No.	P05783
Immunogen	Synthesized peptide derived from the C-terminal region of Human Cytokeratin 18.
Raised In	Rabbit
Species Reactivity	Human,Mouse,Rat
Tested Applications	WB, IHC, IF, ELISA; WB:1:500-1:2000, IHC:1:100-1:300, IF:1:200-1:1000, ELISA:1:10000
Form	Liquid
Conjugate	Non-conjugated
Storage Buffer	Liquid in PBS containing 50% glycerol, 0.5% BSA and 0.02% sodium azide.
Purification Method	The antibody was affinity-purified from rabbit antiserum by affinity-chromatography using epitope-specific immunogen.
Isotype	IgG
Alias	KRT18; CYK18; PIG46; Keratin; type I cytoskeletal 18; Cell proliferation-inducing gene 46 protein; Cytokeratin-18; CK-18; Keratin-18; K18
Immunogen Species	Homo sapiens (Human)
Target Names	KRT18

Image



Western Blot analysis of HeLa cells using Cytokeratin 18 Polyclonal Antibody



Western Blot analysis of L929 COLO 293T HELA MOUSE-brain cells using Cytokeratin 18 Polyclonal Antibody

Usage

For Research Use Only. Not for use in diagnostic or therapeutic procedures.