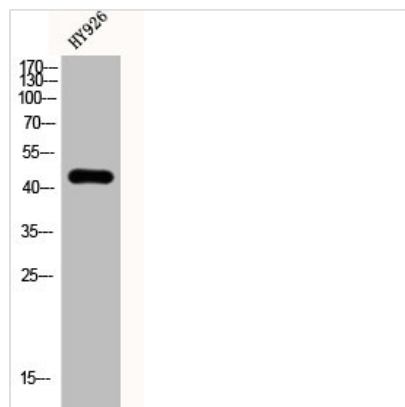




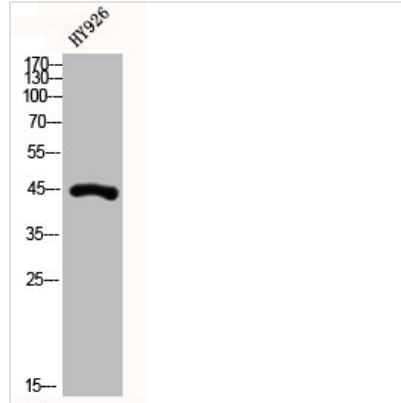
KRT19 Antibody

Product Code	CSB-PA002047
Storage	Upon receipt, store at -20°C or -80°C. Avoid repeated freeze.
Uniprot No.	P08727
Immunogen	Synthesized peptide derived from the Internal region of Human Cytokeratin 19.
Raised In	Rabbit
Species Reactivity	Human,Mouse,Rat
Tested Applications	WB, IHC, IF, ELISA; WB:1:500-1:2000, IHC:1:100-1:300, IF:1:200-1:1000, ELISA:1:10000
Form	Liquid
Conjugate	Non-conjugated
Storage Buffer	Liquid in PBS containing 50% glycerol, 0.5% BSA and 0.02% sodium azide.
Purification Method	The antibody was affinity-purified from rabbit antiserum by affinity-chromatography using epitope-specific immunogen.
Isotype	IgG
Alias	KRT19; Keratin; type I cytoskeletal 19; Cytokeratin-19; CK-19; Keratin-19; K19
Immunogen Species	Homo sapiens (Human)
Target Names	KRT19

Image



Western Blot analysis of HY926 cells using Cytokeratin 19 Polyclonal Antibody



Western Blot analysis of HY926 cells using Cytokeratin 19 Polyclonal Antibody

Usage

For Research Use Only. Not for use in diagnostic or therapeutic procedures.