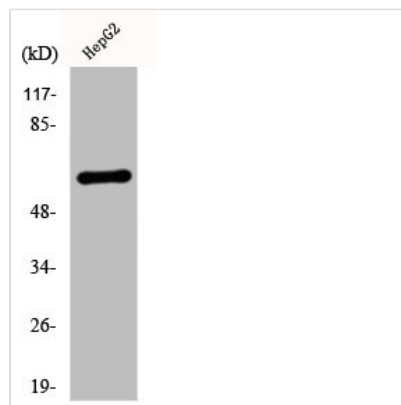




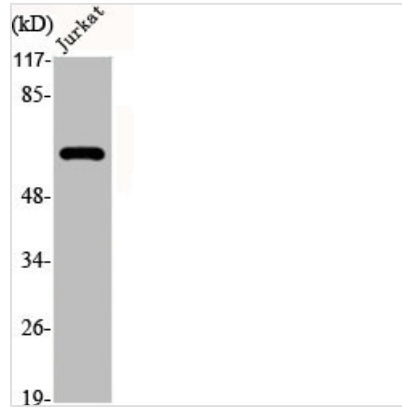
KRT5 Antibody

Product Code	CSB-PA002049
Storage	Upon receipt, store at -20°C or -80°C. Avoid repeated freeze.
Uniprot No.	P13647
Immunogen	Synthesized peptide derived from the C-terminal region of Human Cytokeratin 5.
Raised In	Rabbit
Species Reactivity	Human, Mouse, Rat
Tested Applications	WB, IHC, IF, ELISA; WB:1:500-1:2000, IHC:1:100-1:300, IF:1:200-1:1000, ELISA:1:10000
Form	Liquid
Conjugate	Non-conjugated
Storage Buffer	Liquid in PBS containing 50% glycerol, 0.5% BSA and 0.02% sodium azide.
Purification Method	The antibody was affinity-purified from rabbit antiserum by affinity-chromatography using epitope-specific immunogen.
Isotype	IgG
Alias	KRT5; Keratin; type II cytoskeletal 5; 58 kDa cytokeratin; Cytokeratin-5; CK-5; Keratin-5; K5; Type-II keratin Kb5
Immunogen Species	Homo sapiens (Human)
Target Names	KRT5

Image



Western Blot analysis of HepG2 cells using Cytokeratin 5 Polyclonal Antibody



Western Blot analysis of Jurkat cells using Cytokeratin 5 Polyclonal Antibody

Usage

For Research Use Only. Not for use in diagnostic or therapeutic procedures.