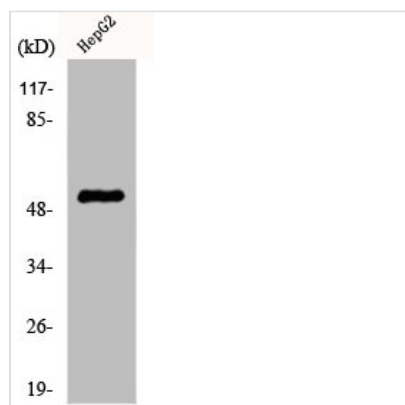




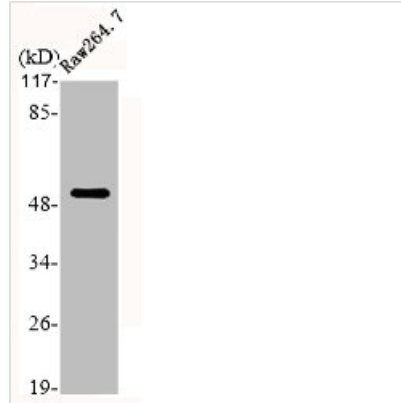
KRT7 Antibody

| | |
|----------------------------|---|
| Product Code | CSB-PA002051 |
| Storage | Upon receipt, store at -20°C or -80°C. Avoid repeated freeze. |
| Uniprot No. | P08729 |
| Immunogen | Synthesized peptide derived from the C-terminal region of Human Cytokeratin 7. |
| Raised In | Rabbit |
| Species Reactivity | Human |
| Tested Applications | WB, IHC, IF, ELISA; WB:1:500-1:2000, IHC:1:100-1:300, IF:1:200-1:1000, ELISA:1:40000 |
| Form | Liquid |
| Conjugate | Non-conjugated |
| Storage Buffer | Liquid in PBS containing 50% glycerol, 0.5% BSA and 0.02% sodium azide. |
| Purification Method | The antibody was affinity-purified from rabbit antiserum by affinity-chromatography using epitope-specific immunogen. |
| Isotype | IgG |
| Alias | KRT7; SCL; Keratin; type II cytoskeletal 7; Cytokeratin-7; CK-7; Keratin-7; K7; Sarcolectin; Type-II keratin Kb7 |
| Immunogen Species | Homo sapiens (Human) |
| Target Names | KRT7 |

Image



Western Blot analysis of HepG2 cells using Cytokeratin 7 Polyclonal Antibody



Western Blot analysis of RAE264.7 cells using Cytokeratin 7 Polyclonal Antibody

Usage

For Research Use Only. Not for use in diagnostic or therapeutic procedures.