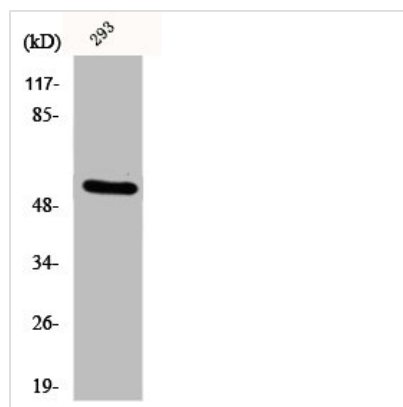




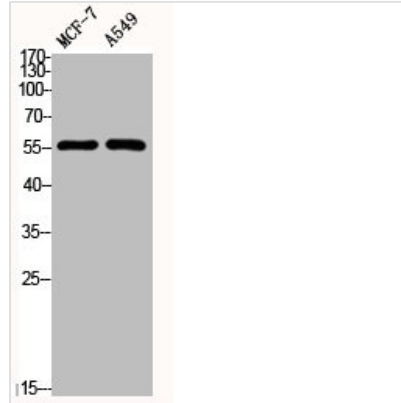
KRT8 Antibody

Product Code	CSB-PA002052
Storage	Upon receipt, store at -20°C or -80°C. Avoid repeated freeze.
Uniprot No.	P05787
Immunogen	Synthesized peptide derived from Human Cytokeratin 8 around the non-phosphorylation site of S432.
Raised In	Rabbit
Species Reactivity	Human,Mouse,Rat
Tested Applications	WB, IHC, IF, ELISA; WB:1:500-1:2000, IHC:1:100-1:300, IF:1:200-1:1000, ELISA:1:5000
Form	Liquid
Conjugate	Non-conjugated
Storage Buffer	Liquid in PBS containing 50% glycerol, 0.5% BSA and 0.02% sodium azide.
Purification Method	The antibody was affinity-purified from rabbit antiserum by affinity-chromatography using epitope-specific immunogen.
Isotype	IgG
Alias	KRT8; CYK8; Keratin; type II cytoskeletal 8; Cytokeratin-8; CK-8; Keratin-8; K8; Type-II keratin Kb8
Immunogen Species	Homo sapiens (Human)
Target Names	KRT8

Image



Western Blot analysis of 293 cells using Cytokeratin 8 Polyclonal Antibody



Western Blot analysis of MCF7 A549 cells using Cytokeratin 8 Polyclonal Antibody

Usage

For Research Use Only. Not for use in diagnostic or therapeutic procedures.