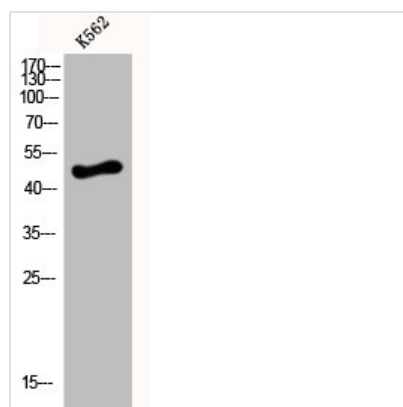




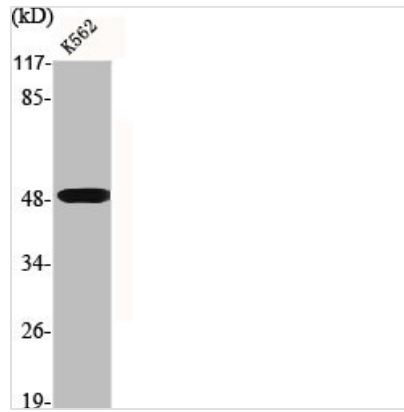
DRD4 Antibody

Product Code	CSB-PA002055
Storage	Upon receipt, store at -20°C or -80°C. Avoid repeated freeze.
Uniprot No.	P21917
Immunogen	Synthesized peptide derived from the C-terminal region of Human D4DR.
Raised In	Rabbit
Species Reactivity	Human,Mouse,Rat
Tested Applications	WB, IF, ELISA; WB:1:500-1:2000, IF:1:200-1:1000, ELISA:1:40000
Form	Liquid
Conjugate	Non-conjugated
Storage Buffer	Liquid in PBS containing 50% glycerol, 0.5% BSA and 0.02% sodium azide.
Purification Method	The antibody was affinity-purified from rabbit antiserum by affinity-chromatography using epitope-specific immunogen.
Isotype	IgG
Alias	DRD4; D(4) dopamine receptor; D(2C) dopamine receptor; Dopamine D4 receptor
Immunogen Species	Homo sapiens (Human)
Target Names	DRD4

Image



Western Blot analysis of K562 cells using D4DR Polyclonal Antibody



Western Blot analysis of K562 cells using D4DR Polyclonal Antibody

Usage

For Research Use Only. Not for use in diagnostic or therapeutic procedures.