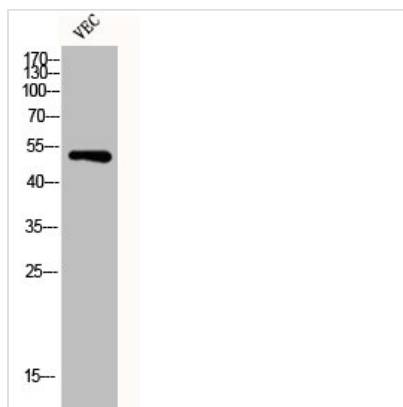




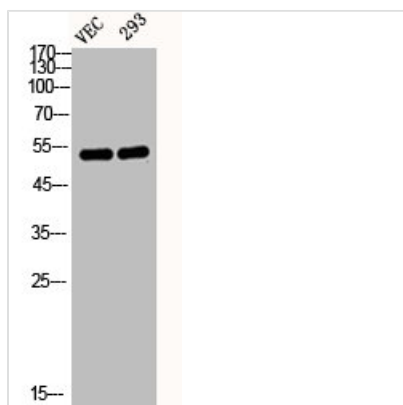
DES Antibody

Product Code	CSB-PA002116
Storage	Upon receipt, store at -20°C or -80°C. Avoid repeated freeze.
Uniprot No.	P17661
Immunogen	Synthesized peptide derived from the C-terminal region of Human Desmin.
Raised In	Rabbit
Species Reactivity	Human,Mouse,Rat
Tested Applications	WB, IHC, IF, ELISA; WB:1:500-1:2000, IHC:1:100-1:300, IF:1:200-1:1000, ELISA:1:10000
Form	Liquid
Conjugate	Non-conjugated
Storage Buffer	Liquid in PBS containing 50% glycerol, 0.5% BSA and 0.02% sodium azide.
Purification Method	The antibody was affinity-purified from rabbit antiserum by affinity-chromatography using epitope-specific immunogen.
Isotype	IgG
Alias	DES; Desmin
Immunogen Species	Homo sapiens (Human)
Target Names	DES

Image



Western Blot analysis of VEC cells using Desmin Polyclonal Antibody



Western Blot analysis of VEC 293 cells using Desmin Polyclonal Antibody