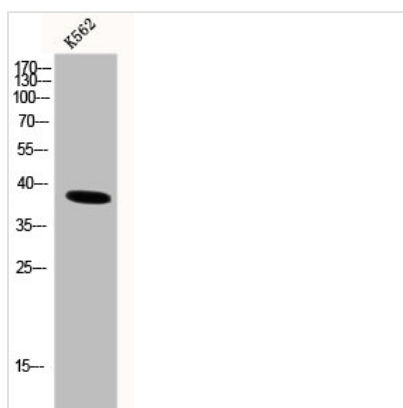




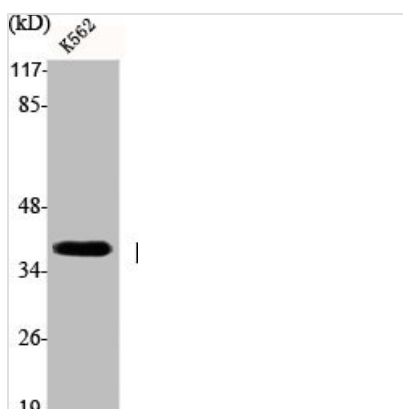
POLB Antibody

Product Code	CSB-PA002173
Storage	Upon receipt, store at -20°C or -80°C. Avoid repeated freeze.
Uniprot No.	P06746
Immunogen	Synthesized peptide derived from the C-terminal region of Human DNA pol β.
Raised In	Rabbit
Species Reactivity	Human,Mouse,Rat
Tested Applications	WB, IHC, ELISA; WB:1:500-1:2000, IHC:1:100-1:300, ELISA:1:10000
Form	Liquid
Conjugate	Non-conjugated
Storage Buffer	Liquid in PBS containing 50% glycerol, 0.5% BSA and 0.02% sodium azide.
Purification Method	The antibody was affinity-purified from rabbit antiserum by affinity-chromatography using epitope-specific immunogen.
Isotype	IgG
Alias	POLB; DNA polymerase beta
Immunogen Species	Homo sapiens (Human)
Target Names	POLB

Image



Western Blot analysis of K562 cells using DNA pol β Polyclonal Antibody



Western Blot analysis of K562 cells using DNA pol β Polyclonal Antibody



Usage

For Research Use Only. Not for use in diagnostic or therapeutic procedures.