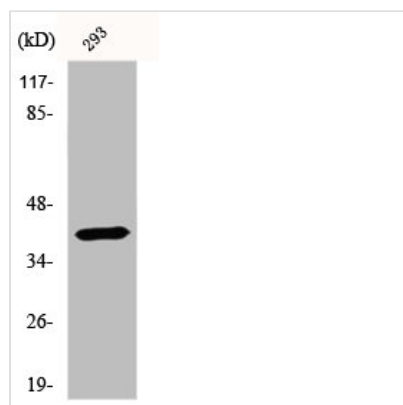




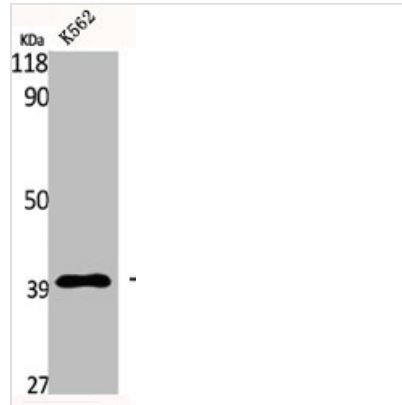
ECI2 Antibody

Product Code	CSB-PA002204
Storage	Upon receipt, store at -20°C or -80°C. Avoid repeated freeze.
Uniprot No.	O75521
Immunogen	Synthesized peptide derived from the Internal region of Human DRS-1.
Raised In	Rabbit
Species Reactivity	Human
Tested Applications	WB, IHC, ELISA; WB:1:500-1:2000, IHC:1:100-1:300, ELISA:1:20000
Form	Liquid
Conjugate	Non-conjugated
Storage Buffer	Liquid in PBS containing 50% glycerol, 0.5% BSA and 0.02% sodium azide.
Purification Method	The antibody was affinity-purified from rabbit antiserum by affinity-chromatography using epitope-specific immunogen.
Isotype	IgG
Alias	ECI2; DRS1; HCA88; PECl; Enoyl-CoA delta isomerase 2; mitochondrial; DRS-1; Delta(3),delta(2)-enoyl-CoA isomerase; D3,D2-enoyl-CoA isomerase; Diazepam-binding inhibitor-related protein 1; DBI-related protein 1; Dodecenoyl-CoA isomerase; Hep
Immunogen Species	Homo sapiens (Human)
Target Names	ECI2

Image



Western Blot analysis of 293 cells using DRS-1 Polyclonal Antibody



Western Blot analysis of K562 cells using DRS-1 Polyclonal Antibody

Usage

For Research Use Only. Not for use in diagnostic or therapeutic procedures.