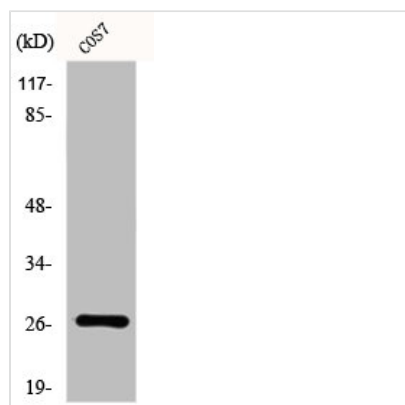




DUSP19 Antibody

Product Code	CSB-PA002215
Storage	Upon receipt, store at -20°C or -80°C. Avoid repeated freeze.
Uniprot No.	Q8WTR2
Immunogen	Synthesized peptide derived from the Internal region of Human DUSP19.
Raised In	Rabbit
Species Reactivity	Human,Monkey
Tested Applications	WB, IF, ELISA; WB:1:500-1:2000, IF:1:200-1:1000, ELISA:1:20000
Form	Liquid
Conjugate	Non-conjugated
Storage Buffer	Liquid in PBS containing 50% glycerol, 0.5% BSA and 0.02% sodium azide.
Purification Method	The antibody was affinity-purified from rabbit antiserum by affinity-chromatography using epitope-specific immunogen.
Isotype	IgG
Alias	DUSP19; DUSP17; LMWDSP3; SKRP1; Dual specificity protein phosphatase 19; Dual specificity phosphatase TS-DSP1; Low molecular weight dual specificity phosphatase 3; LMW-DSP3; Protein phosphatase SKRP1; Stress-activated protein kinase pathway
Immunogen Species	Homo sapiens (Human)
Target Names	DUSP19

Image



Western Blot analysis of COS7 cells using DUSP19 Polyclonal Antibody