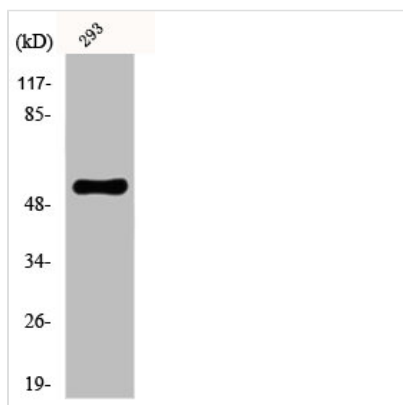




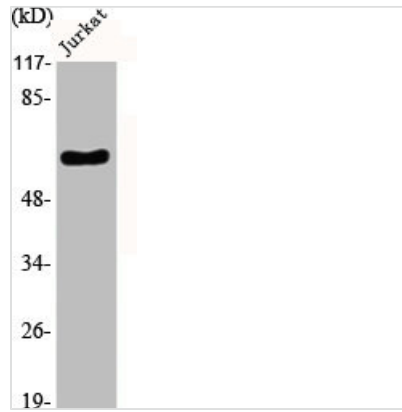
SLC1A1 Antibody

Product Code	CSB-PA002241
Storage	Upon receipt, store at -20°C or -80°C. Avoid repeated freeze.
Uniprot No.	P43005
Immunogen	Synthesized peptide derived from the Internal region of Human EAAT3.
Raised In	Rabbit
Species Reactivity	Human,Mouse,Rat
Tested Applications	WB, ELISA; WB:1:500-1:2000, ELISA:1:10000
Form	Liquid
Conjugate	Non-conjugated
Storage Buffer	Liquid in PBS containing 50% glycerol, 0.5% BSA and 0.02% sodium azide.
Purification Method	The antibody was affinity-purified from rabbit antiserum by affinity-chromatography using epitope-specific immunogen.
Isotype	IgG
Alias	SLC1A1; EAAC1; EAAT3; Excitatory amino acid transporter 3; Excitatory amino acid carrier 1; Neuronal and epithelial glutamate transporter; Sodium-dependent glutamate/aspartate transporter 3; Solute carrier family 1 member 1
Immunogen Species	Homo sapiens (Human)
Target Names	SLC1A1

Image



Western Blot analysis of 293 cells using EAAT3 Polyclonal Antibody



Western Blot analysis of Jurkat cells using EAAT3 Polyclonal Antibody

Usage

For Research Use Only. Not for use in diagnostic or therapeutic procedures.