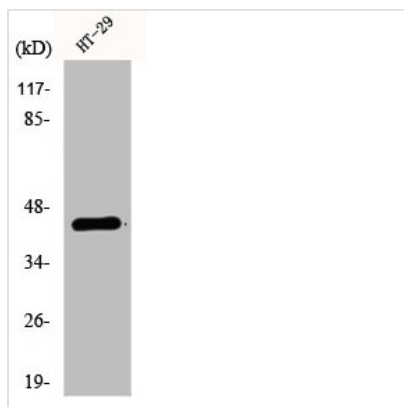




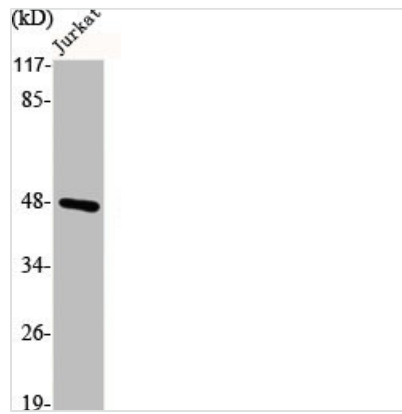
S1PR1 Antibody

Product Code	CSB-PA002247
Storage	Upon receipt, store at -20°C or -80°C. Avoid repeated freeze.
Uniprot No.	P21453
Immunogen	Synthesized peptide derived from Human EDG-1 around the non-phosphorylation site of T236.
Raised In	Rabbit
Species Reactivity	Human,Mouse,Rat
Tested Applications	WB, IF, ELISA; WB:1:500-1:2000, IF:1:200-1:1000, ELISA:1:5000
Form	Liquid
Conjugate	Non-conjugated
Storage Buffer	Liquid in PBS containing 50% glycerol, 0.5% BSA and 0.02% sodium azide.
Purification Method	The antibody was affinity-purified from rabbit antiserum by affinity-chromatography using epitope-specific immunogen.
Isotype	IgG
Product Type	Polyclonal Antibody
Immunogen Species	Homo sapiens (Human)
Target Names	S1PR1

Image



Western Blot analysis of HT-29 cells using EDG-1 Polyclonal Antibody



Western Blot analysis of Jurkat cells using EDG-1 Polyclonal Antibody