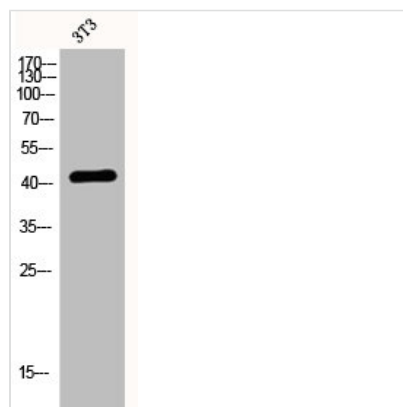




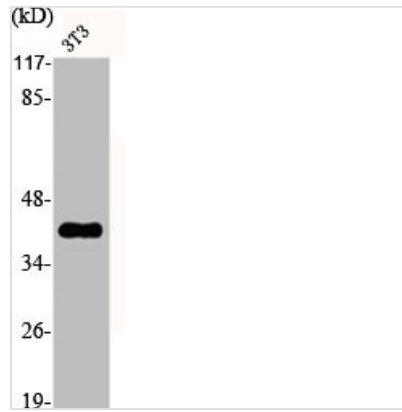
S1PR3 Antibody

Product Code	CSB-PA002248
Storage	Upon receipt, store at -20°C or -80°C. Avoid repeated freeze.
Uniprot No.	Q99500
Immunogen	Synthesized peptide derived from the N-terminal region of Human EDG-3.
Raised In	Rabbit
Species Reactivity	Human
Tested Applications	WB, IF, ELISA; WB:1:500-1:2000, IF:1:200-1:1000, ELISA:1:5000
Form	Liquid
Conjugate	Non-conjugated
Storage Buffer	Liquid in PBS containing 50% glycerol, 0.5% BSA and 0.02% sodium azide.
Purification Method	The antibody was affinity-purified from rabbit antiserum by affinity-chromatography using epitope-specific immunogen.
Isotype	IgG
Alias	S1PR3; EDG3; Sphingosine 1-phosphate receptor 3; S1P receptor 3; S1P3; Endothelial differentiation G-protein coupled receptor 3; Sphingosine 1-phosphate receptor Edg-3; S1P receptor Edg-3
Immunogen Species	Homo sapiens (Human)
Target Names	S1PR3

Image



Western Blot analysis of 3T3 cells using EDG-3 Polyclonal Antibody



Western Blot analysis of NIH-3T3 cells using EDG-3 Polyclonal Antibody

Usage

For Research Use Only. Not for use in diagnostic or therapeutic procedures.