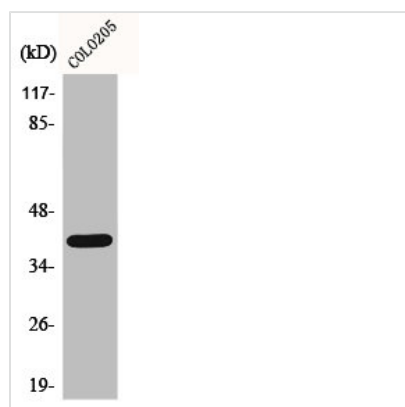




S1PR2 Antibody

Product Code	CSB-PA002249
Storage	Upon receipt, store at -20°C or -80°C. Avoid repeated freeze.
Uniprot No.	O95136
Immunogen	Synthesized peptide derived from the C-terminal region of Human EDG-5.
Raised In	Rabbit
Species Reactivity	Human,Mouse,Rat
Tested Applications	WB, IHC, IF, ELISA; WB:1:500-1:2000, IHC:1:100-1:300, IF:1:200-1:1000, ELISA:1:10000
Form	Liquid
Conjugate	Non-conjugated
Storage Buffer	Liquid in PBS containing 50% glycerol, 0.5% BSA and 0.02% sodium azide.
Purification Method	The antibody was affinity-purified from rabbit antiserum by affinity-chromatography using epitope-specific immunogen.
Isotype	IgG
Alias	S1PR2; EDG5; Sphingosine 1-phosphate receptor 2; S1P receptor 2; S1P2; Endothelial differentiation G-protein coupled receptor 5; Sphingosine 1-phosphate receptor Edg-5; S1P receptor Edg-5
Immunogen Species	Homo sapiens (Human)
Target Names	S1PR2

Image



Western Blot analysis of COLO205 cells using EDG-5 Polyclonal Antibody