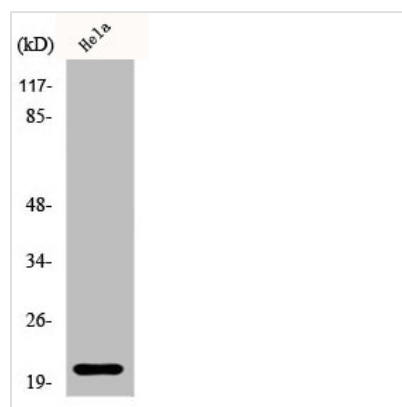




EID1 Antibody

Product Code	CSB-PA002286
Storage	Upon receipt, store at -20°C or -80°C. Avoid repeated freeze.
Uniprot No.	Q9Y6B2
Immunogen	Synthesized peptide derived from the Internal region of Human EID-1.
Raised In	Rabbit
Species Reactivity	Human
Tested Applications	WB, IHC, IF, ELISA; WB:1:500-1:2000, IHC:1:100-1:300, IF:1:200-1:1000, ELISA:1:10000
Form	Liquid
Conjugate	Non-conjugated
Storage Buffer	Liquid in PBS containing 50% glycerol, 0.5% BSA and 0.02% sodium azide.
Purification Method	The antibody was affinity-purified from rabbit antiserum by affinity-chromatography using epitope-specific immunogen.
Isotype	IgG
Alias	EID1; C15orf3; CRI1; RBP21; PNAS-22; PTD014; EP300-interacting inhibitor of differentiation 1; 21 kDa pRb-associated protein; CREBBP/EP300 inhibitory protein 1; E1A-like inhibitor of differentiation 1; EID-1
Immunogen Species	Homo sapiens (Human)
Target Names	EID1

Image



Western Blot analysis of HeLa cells using EID-1 Polyclonal Antibody

Usage For Research Use Only. Not for use in diagnostic or therapeutic procedures.