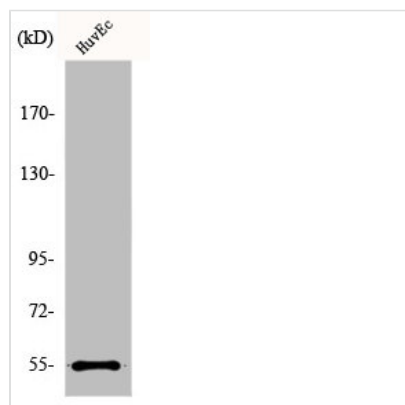




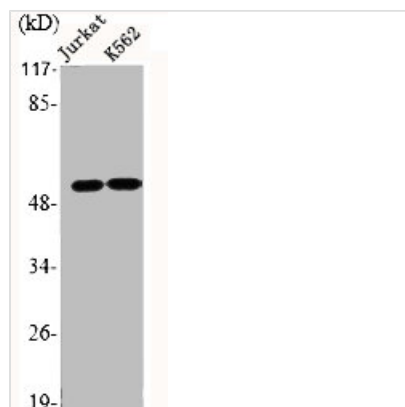
EMR4P Antibody

Product Code	CSB-PA002338
Storage	Upon receipt, store at -20°C or -80°C. Avoid repeated freeze.
Uniprot No.	Q86SQ3
Immunogen	Synthesized peptide derived from the Internal region of Human EMR4.
Raised In	Rabbit
Species Reactivity	Human,Monkey
Tested Applications	WB, IF, ELISA; WB:1:500-1:2000, IF:1:200-1:1000, ELISA:1:20000
Form	Liquid
Conjugate	Non-conjugated
Storage Buffer	Liquid in PBS containing 50% glycerol, 0.5% BSA and 0.02% sodium azide.
Purification Method	The antibody was affinity-purified from rabbit antiserum by affinity-chromatography using epitope-specific immunogen.
Isotype	IgG
Alias	EMR4P; EMR4; GPR127; PGR16; Putative EGF-like module-containing mucin-like hormone receptor-like 4; EGF-like module receptor 4; G-protein coupled receptor 127; G-protein coupled receptor PGR16
Immunogen Species	Homo sapiens (Human)
Target Names	ADGRE4P

Image



Western Blot analysis of COLO205 cells using EMR4 Polyclonal Antibody



Western Blot analysis of Jurkat K562 cells using EMR4 Polyclonal Antibody