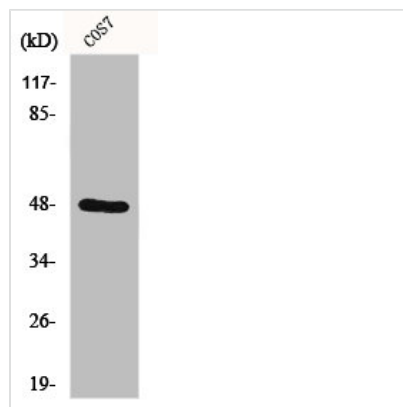




SH3GLB2 Antibody

Product Code	CSB-PA002346
Storage	Upon receipt, store at -20°C or -80°C. Avoid repeated freeze.
Uniprot No.	Q9NR46
Immunogen	Synthesized peptide derived from the Internal region of Human Endophilin B2.
Raised In	Rabbit
Species Reactivity	Human, Mouse, Rat, Monkey
Tested Applications	WB, IHC, ELISA; WB:1:500-1:2000, IHC:1:100-1:300, ELISA:1:40000
Form	Liquid
Conjugate	Non-conjugated
Storage Buffer	Liquid in PBS containing 50% glycerol, 0.5% BSA and 0.02% sodium azide.
Purification Method	The antibody was affinity-purified from rabbit antiserum by affinity-chromatography using epitope-specific immunogen.
Isotype	IgG
Alias	SH3GLB2; KIAA1848; PP578; Endophilin-B2; SH3 domain-containing GRB2-like protein B2
Immunogen Species	Homo sapiens (Human)
Target Names	SH3GLB2

Image



Western Blot analysis of COS7 cells using Endophilin B2 Polyclonal Antibody

Usage

For Research Use Only. Not for use in diagnostic or therapeutic procedures.