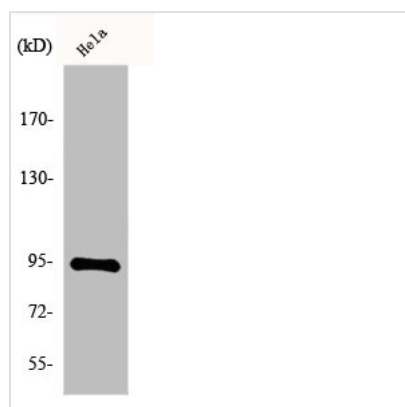




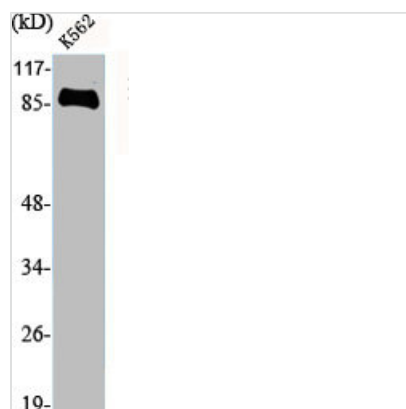
HSP90B1 Antibody

Product Code	CSB-PA002347
Storage	Upon receipt, store at -20°C or -80°C. Avoid repeated freeze.
Uniprot No.	P14625
Immunogen	Synthesized peptide derived from the C-terminal region of Human Endoplasmin.
Raised In	Rabbit
Species Reactivity	Human,Mouse
Tested Applications	WB, IHC, IF, ELISA; WB:1:500-1:2000, IHC:1:100-1:300, IF:1:200-1:1000, ELISA:1:20000
Form	Liquid
Conjugate	Non-conjugated
Storage Buffer	Liquid in PBS containing 50% glycerol, 0.5% BSA and 0.02% sodium azide.
Purification Method	The antibody was affinity-purified from rabbit antiserum by affinity-chromatography using epitope-specific immunogen.
Isotype	IgG
Alias	HSP90B1; GRP94; TRA1; Endoplasmin; 94 kDa glucose-regulated protein; GRP-94; Heat shock protein 90 kDa beta member 1; Tumor rejection antigen 1; gp96 homolog
Immunogen Species	Homo sapiens (Human)
Target Names	HSP90B1

Image



Western Blot analysis of HeLa cells using Endoplasmin Polyclonal Antibody



Western Blot analysis of K562 cells using
Endoplasmic Polyclonal Antibody