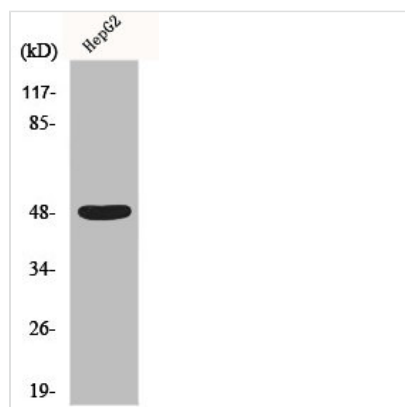




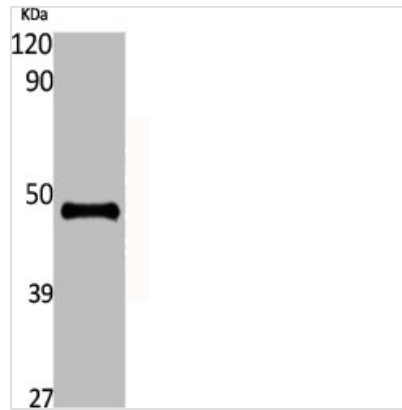
ENO2 Antibody

Product Code	CSB-PA002348
Storage	Upon receipt, store at -20°C or -80°C. Avoid repeated freeze.
Uniprot No.	P09104
Immunogen	Synthesized peptide derived from the C-terminal region of Human Enolase.
Raised In	Rabbit
Species Reactivity	Human, Mouse, Rat
Tested Applications	WB, IHC, IF, ELISA; WB:1:500-1:2000, IHC:1:100-1:300, IF:1:200-1:1000, ELISA:1:10000
Form	Liquid
Conjugate	Non-conjugated
Storage Buffer	Liquid in PBS containing 50% glycerol, 0.5% BSA and 0.02% sodium azide.
Purification Method	The antibody was affinity-purified from rabbit antiserum by affinity-chromatography using epitope-specific immunogen.
Isotype	IgG
Alias	ENO2; Gamma-enolase; 2-phospho-D-glycerate hydro-lyase; Enolase 2; Neural enolase; Neuron-specific enolase; NSE
Immunogen Species	Homo sapiens (Human)
Target Names	ENO2

Image



Western Blot analysis of HepG2 cells using Enolase Polyclonal Antibody



Western Blot analysis of various cells using Enolase Polyclonal Antibody

Usage

For Research Use Only. Not for use in diagnostic or therapeutic procedures.