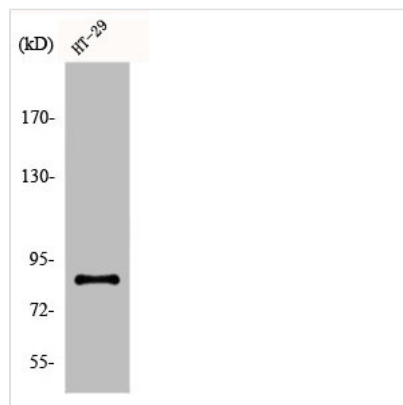




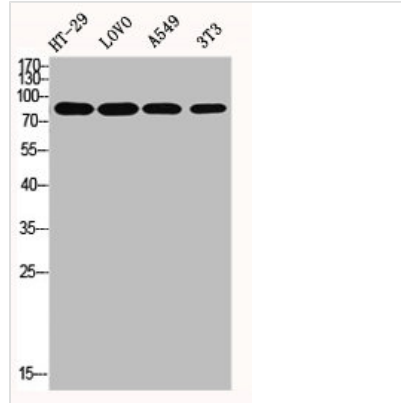
EZH1 Antibody

Product Code	CSB-PA002349
Storage	Upon receipt, store at -20°C or -80°C. Avoid repeated freeze.
Uniprot No.	Q92800
Immunogen	Synthesized peptide derived from the Internal region of Human ENX-2.
Raised In	Rabbit
Species Reactivity	Human,Mouse,Monkey
Tested Applications	WB, IHC, IF, ELISA; WB:1:500-1:2000, IHC:1:100-1:300, IF:1:200-1:1000, ELISA:1:40000
Form	Liquid
Conjugate	Non-conjugated
Storage Buffer	Liquid in PBS containing 50% glycerol, 0.5% BSA and 0.02% sodium azide.
Purification Method	The antibody was affinity-purified from rabbit antiserum by affinity-chromatography using epitope-specific immunogen.
Isotype	IgG
Alias	EZH1; KIAA0388; Histone-lysine N-methyltransferase EZH1; ENX-2; Enhancer of zeste homolog 1
Immunogen Species	Homo sapiens (Human)
Target Names	EZH1

Image



Western Blot analysis of COS7 cells using EZH1 Polyclonal Antibody



Western Blot analysis of HT29 LOVO A549 NIH-3T3 cells using ENX-2 Polyclonal Antibody

Usage

For Research Use Only. Not for use in diagnostic or therapeutic procedures.