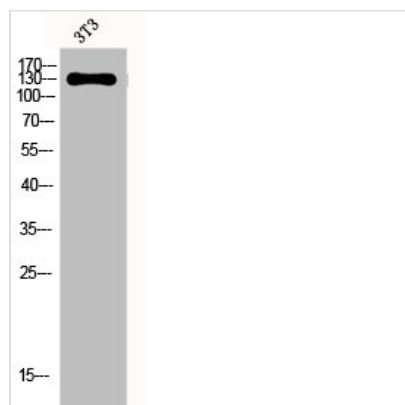




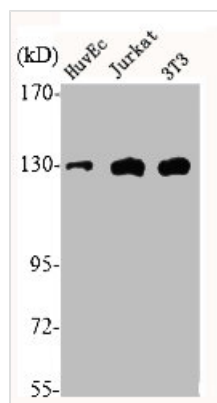
# EPHA2/EPHA3/EPHA4 Antibody

<b>Product Code</b>	CSB-PA002362
<b>Storage</b>	Upon receipt, store at -20°C or -80°C. Avoid repeated freeze.
<b>Uniprot No.</b>	P29317/P29320/P54764
<b>Immunogen</b>	Synthesized peptide derived from Human EphA2/3/4 around the non-phosphorylation site of Y588/596.
<b>Raised In</b>	Rabbit
<b>Species Reactivity</b>	Human,Rat
<b>Tested Applications</b>	WB, IF, ELISA; WB:1:500-1:2000, IF:1:200-1:1000, ELISA:1:40000
<b>Form</b>	Liquid
<b>Conjugate</b>	Non-conjugated
<b>Storage Buffer</b>	Liquid in PBS containing 50% glycerol, 0.5% BSA and 0.02% sodium azide.
<b>Purification Method</b>	The antibody was affinity-purified from rabbit antiserum by affinity-chromatography using epitope-specific immunogen.
<b>Isotype</b>	IgG
<b>Alias</b>	EPHA2; ECK; Ephrin type-A receptor 2; Epithelial cell kinase; Tyrosine-protein kinase receptor ECK; EPHA3; ETK; ETK1; HEK; TYRO4; Ephrin type-A receptor 3; EPH-like kinase 4; EK4; hEK4; HEK; Human embryo kinase; Tyrosine-protein kinase TYRO
<b>Immunogen Species</b>	Homo sapiens (Human)
<b>Target Names</b>	EPHA2/EPHA3/EPHA4

## Image



Western Blot analysis of 3T3 cells using EphA2/3/4 Polyclonal Antibody



Western Blot analysis of HuvEc Jurkat 3T3 cells using EphA2/3/4 Polyclonal Antibody