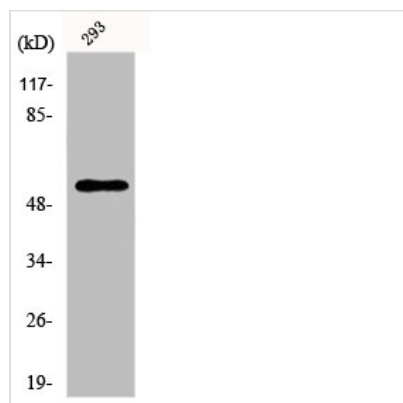




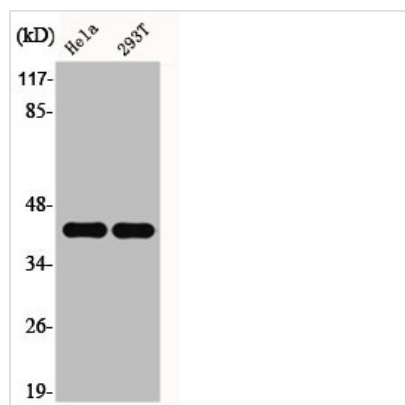
EFNB1/EFNB2 Antibody

Product Code	CSB-PA002377
Storage	Upon receipt, store at -20°C or -80°C. Avoid repeated freeze.
Uniprot No.	P98172/P52799
Immunogen	Synthesized peptide derived from Human Ephrin-B1/2 around the non-phosphorylation site of Y330.
Raised In	Rabbit
Species Reactivity	Human,Mouse,Rat
Tested Applications	WB, IHC, ELISA; WB:1:500-1:2000, IHC:1:100-1:300, ELISA:1:40000
Form	Liquid
Conjugate	Non-conjugated
Storage Buffer	Liquid in PBS containing 50% glycerol, 0.5% BSA and 0.02% sodium azide.
Purification Method	The antibody was affinity-purified from rabbit antiserum by affinity-chromatography using epitope-specific immunogen.
Isotype	IgG
Alias	EFNB1; EFL3; EPLG2; LERK2; Ephrin-B1; EFL-3; ELK ligand; ELK-L; EPH-related receptor tyrosine kinase ligand 2; LERK-2; EFNB2; EPLG5; HTKL; LERK5; Ephrin-B2; EPH-related receptor tyrosine kinase ligand 5; LERK-5; HTK ligand; HTK-L
Immunogen Species	Homo sapiens (Human)
Target Names	EFNB1/EFNB2

Image



Western Blot analysis of 293 cells using Ephrin-B1/2 Polyclonal Antibody



Western Blot analysis of HELA 293T cells using Ephrin-B1/2 Polyclonal Antibody