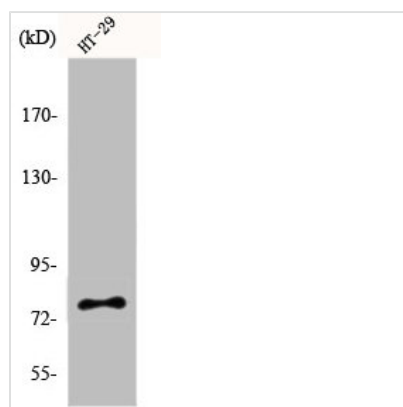




EPS8L1 Antibody

Product Code	CSB-PA002378
Storage	Upon receipt, store at -20°C or -80°C. Avoid repeated freeze.
Uniprot No.	Q8TE68
Immunogen	Synthesized peptide derived from the Internal region of Human Eps8L1.
Raised In	Rabbit
Species Reactivity	Human, Mouse
Tested Applications	WB, IHC, IF, ELISA; WB:1:500-1:2000, IHC:1:100-1:300, IF:1:200-1:1000, ELISA:1:20000
Form	Liquid
Conjugate	Non-conjugated
Storage Buffer	Liquid in PBS containing 50% glycerol, 0.5% BSA and 0.02% sodium azide.
Purification Method	The antibody was affinity-purified from rabbit antiserum by affinity-chromatography using epitope-specific immunogen.
Isotype	IgG
Alias	EPS8L1; DRC3; EPS8R1; PP10566; Epidermal growth factor receptor kinase substrate 8-like protein 1; EPS8-like protein 1; Epidermal growth factor receptor pathway substrate 8-related protein 1; EPS8-related protein 1
Immunogen Species	Homo sapiens (Human)
Target Names	EPS8L1

Image



Western Blot analysis of HT29 cells using Eps8L1 Polyclonal Antibody

Usage For Research Use Only. Not for use in diagnostic or therapeutic procedures.