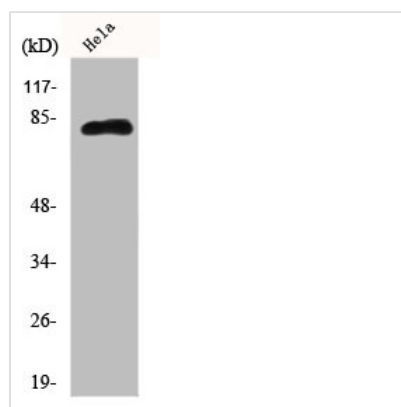




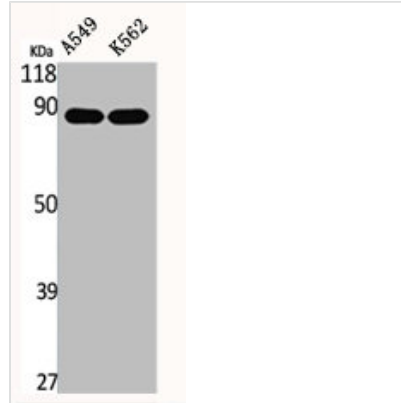
EPS8L2 Antibody

Product Code	CSB-PA002383
Storage	Upon receipt, store at -20°C or -80°C. Avoid repeated freeze.
Uniprot No.	Q9H6S3
Immunogen	Synthesized peptide derived from the N-terminal region of Human Eps8L2.
Raised In	Rabbit
Species Reactivity	Human, Mouse
Tested Applications	WB, IHC, IF, ELISA; WB:1:500-1:2000, IHC:1:100-1:300, IF:1:200-1:1000, ELISA:1:40000
Form	Liquid
Conjugate	Non-conjugated
Storage Buffer	Liquid in PBS containing 50% glycerol, 0.5% BSA and 0.02% sodium azide.
Purification Method	The antibody was affinity-purified from rabbit antiserum by affinity-chromatography using epitope-specific immunogen.
Isotype	IgG
Alias	EPS8L2; EPS8R2; PP13181; Epidermal growth factor receptor kinase substrate 8-like protein 2; EPS8-like protein 2; Epidermal growth factor receptor pathway substrate 8-related protein 2; EPS8-related protein 2
Immunogen Species	Homo sapiens (Human)
Target Names	EPS8L2

Image



Western Blot analysis of HeLa cells using Eps8L2 Polyclonal Antibody



Western Blot analysis of A549 K562 cells using Eps8L2 Polyclonal Antibody

Usage

For Research Use Only. Not for use in diagnostic or therapeutic procedures.