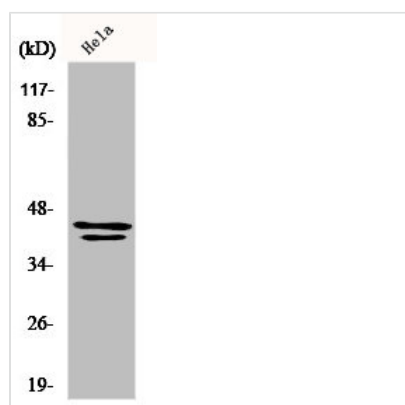




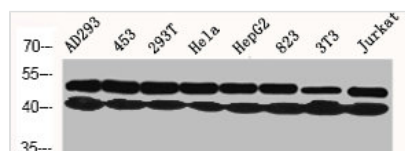
MAPK3/MAPK1 Antibody

Product Code	CSB-PA002421
Storage	Upon receipt, store at -20°C or -80°C. Avoid repeated freeze.
Uniprot No.	P27361/P28482
Immunogen	Synthesized peptide derived from Human ERK 1/2 around the non-phosphorylation site of Y204.
Raised In	Rabbit
Species Reactivity	Human,Mouse,Rat
Tested Applications	WB, IHC, ELISA; WB:1:500-1:2000, IHC:1:100-1:300, ELISA:1:10000
Form	Liquid
Conjugate	Non-conjugated
Storage Buffer	Liquid in PBS containing 50% glycerol, 0.5% BSA and 0.02% sodium azide.
Purification Method	The antibody was affinity-purified from rabbit antiserum by affinity-chromatography using epitope-specific immunogen.
Isotype	IgG
Alias	MAPK3; ERK1; PRKM3; Mitogen-activated protein kinase 3; MAP kinase 3; MAPK 3; ERT2; Extracellular signal-regulated kinase 1; ERK-1; Insulin-stimulated MAP2 kinase; MAP kinase isoform p44; p44-MAPK; Microtubule-associated protein 2 kinase; p
Immunogen Species	Homo sapiens (Human)
Target Names	MAPK3/MAPK1

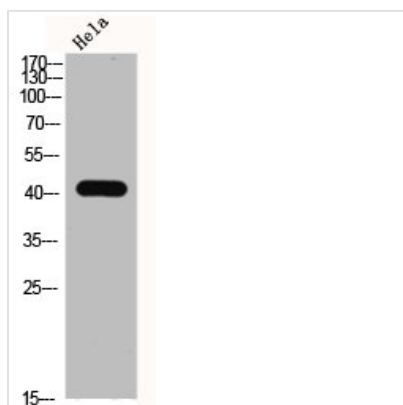
Image



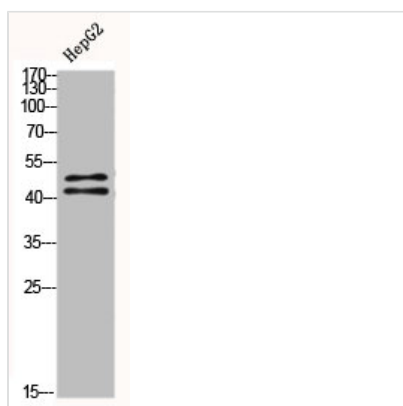
Western Blot analysis of HeLa cells using ERK 1/2 Polyclonal Antibody



Western Blot analysis of AD293 453 293T HELA HepG2 823 NIH-3T3 Jurkat cells using ERK 1/2 Polyclonal Antibody



Western Blot analysis of HELA using ERK 1/2 Polyclonal Antibody.



Western Blot analysis of HEPG2 using ERK 1/2 Polyclonal Antibody