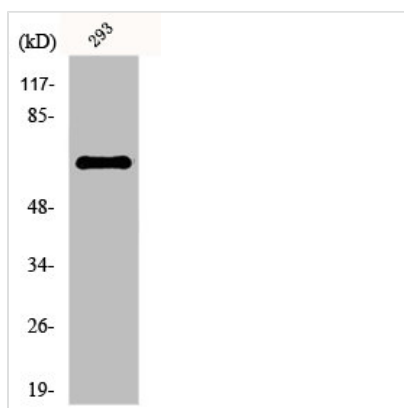




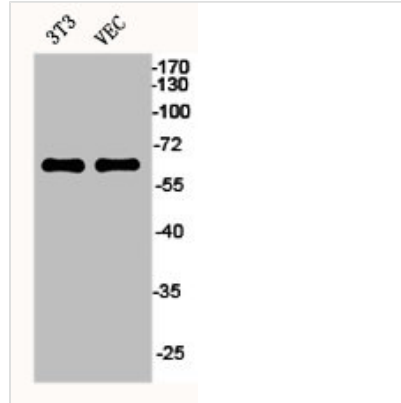
ESR1 Antibody

Product Code	CSB-PA002442
Storage	Upon receipt, store at -20°C or -80°C. Avoid repeated freeze.
Uniprot No.	P03372
Immunogen	Synthesized peptide derived from Human ER α around the non-phosphorylation site of Y537.
Raised In	Rabbit
Species Reactivity	Human,Mouse,Rat
Tested Applications	WB, IHC, IF, ELISA; WB:1:500-1:2000, IHC:1:100-1:300, IF:1:200-1:1000, ELISA:1:10000
Form	Liquid
Conjugate	Non-conjugated
Storage Buffer	Liquid in PBS containing 50% glycerol, 0.5% BSA and 0.02% sodium azide.
Purification Method	The antibody was affinity-purified from rabbit antiserum by affinity-chromatography using epitope-specific immunogen.
Isotype	IgG
Alias	ESR1; ESR; NR3A1; Estrogen receptor; ER; ER-alpha; Estradiol receptor; Nuclear receptor subfamily 3 group A member 1
Immunogen Species	Homo sapiens (Human)
Target Names	ESR1

Image



Western Blot analysis of 293 cells using ER α Polyclonal Antibody



Western Blot analysis of NIH-3T3 VEC cells using ER α Polyclonal Antibody

Usage

For Research Use Only. Not for use in diagnostic or therapeutic procedures.