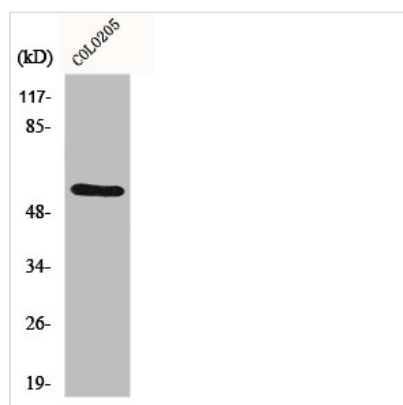




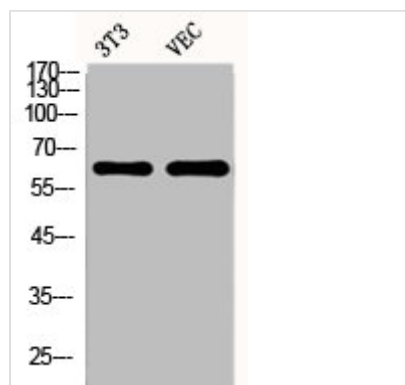
ESR2 Antibody

Product Code	CSB-PA002446
Storage	Upon receipt, store at -20°C or -80°C. Avoid repeated freeze.
Uniprot No.	Q92731
Immunogen	Synthesized peptide derived from Human ER β around the non-phosphorylation site of S105.
Raised In	Rabbit
Species Reactivity	Human,Mouse,Rat
Tested Applications	WB, IF, ELISA; WB:1:500-1:2000, IF:1:200-1:1000, ELISA:1:10000
Form	Liquid
Conjugate	Non-conjugated
Storage Buffer	Preservative: 0.03% Proclin 300Constituents: 50% Glycerol, 0.01M PBS, PH 7.4
Purification Method	The antibody was affinity-purified from rabbit antiserum by affinity-chromatography using epitope-specific immunogen.
Isotype	IgG
Alias	ESR2; ESTRB; NR3A2; Estrogen receptor beta; ER-beta; Nuclear receptor subfamily 3 group A member 2
Immunogen Species	Homo sapiens (Human)
Target Names	ESR2

Image



Western Blot analysis of COLO205 cells using ER β Polyclonal Antibody



Western Blot analysis of NIH-3T3 VEC cells using ER β Polyclonal Antibody