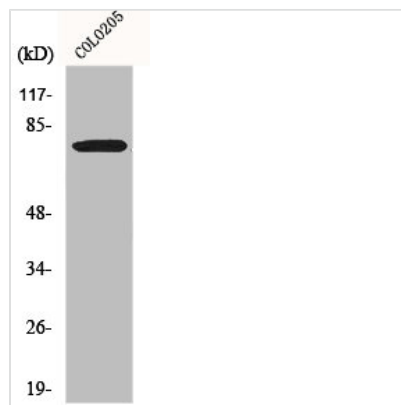




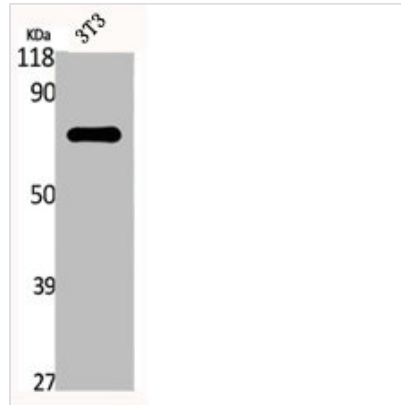
EWSR1 Antibody

Product Code	CSB-PA002452
Storage	Upon receipt, store at -20°C or -80°C. Avoid repeated freeze.
Uniprot No.	Q01844
Immunogen	Synthesized peptide derived from the Internal region of Human EWS.
Raised In	Rabbit
Species Reactivity	Human,Mouse,Rat
Tested Applications	WB, ELISA; WB:1:500-1:2000, ELISA:1:10000
Form	Liquid
Conjugate	Non-conjugated
Storage Buffer	Liquid in PBS containing 50% glycerol, 0.5% BSA and 0.02% sodium azide.
Purification Method	The antibody was affinity-purified from rabbit antiserum by affinity-chromatography using epitope-specific immunogen.
Isotype	IgG
Alias	EWSR1; EWS; RNA-binding protein EWS; EWS oncogene; Ewing sarcoma breakpoint region 1 protein
Immunogen Species	Homo sapiens (Human)
Target Names	EWSR1

Image



Western Blot analysis of COLO205 cells using EWS Polyclonal Antibody



Western Blot analysis of NIH-3T3 cells using EWS Polyclonal Antibody

Usage

For Research Use Only. Not for use in diagnostic or therapeutic procedures.