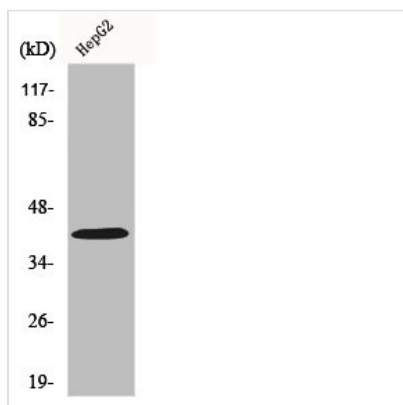




RIMKLB Antibody

Product Code	CSB-PA002478
Storage	Upon receipt, store at -20°C or -80°C. Avoid repeated freeze.
Uniprot No.	Q9ULI2
Immunogen	Synthesized peptide derived from the Internal region of Human FAM80B.
Raised In	Rabbit
Species Reactivity	Human, Mouse, Rat, Monkey
Tested Applications	WB, ELISA; WB:1:500-1:2000, ELISA:1:5000
Form	Liquid
Conjugate	Non-conjugated
Storage Buffer	Liquid in PBS containing 50% glycerol, 0.5% BSA and 0.02% sodium azide.
Purification Method	The antibody was affinity-purified from rabbit antiserum by affinity-chromatography using epitope-specific immunogen.
Isotype	IgG
Alias	RIMKLB; FAM80B; KIAA1238; Beta-citryl-glutamate synthase B; N-acetyl-aspartyl-glutamate synthetase B; NAAG synthetase B; NAAGS; Ribosomal protein S6 modification-like protein B
Immunogen Species	Homo sapiens (Human)
Target Names	RIMKLB

Image



Western Blot analysis of COS7 cells using FAM80B Polyclonal Antibody

Usage

For Research Use Only. Not for use in diagnostic or therapeutic procedures.