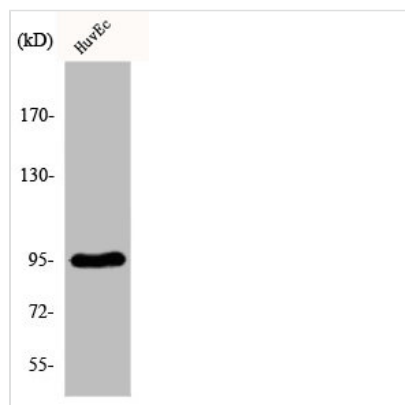




FES Antibody

Product Code	CSB-PA002518
Storage	Upon receipt, store at -20°C or -80°C. Avoid repeated freeze.
Uniprot No.	P07332
Immunogen	Synthesized peptide derived from the Internal region of Human Fes.
Raised In	Rabbit
Species Reactivity	Human,Mouse
Tested Applications	WB, IHC, ELISA; WB:1:500-1:2000, IHC:1:100-1:300, ELISA:1:20000
Form	Liquid
Conjugate	Non-conjugated
Storage Buffer	Liquid in PBS containing 50% glycerol, 0.5% BSA and 0.02% sodium azide.
Purification Method	The antibody was affinity-purified from rabbit antiserum by affinity-chromatography using epitope-specific immunogen.
Isotype	IgG
Alias	FES; FPS; Tyrosine-protein kinase Fes/Fps; Feline sarcoma/Fujinami avian sarcoma oncogene homolog; Proto-oncogene c-Fes; Proto-oncogene c-Fps; p93c-fes
Immunogen Species	Homo sapiens (Human)
Target Names	FES

Image



Western Blot analysis of HuvEc cells using Fes Polyclonal Antibody