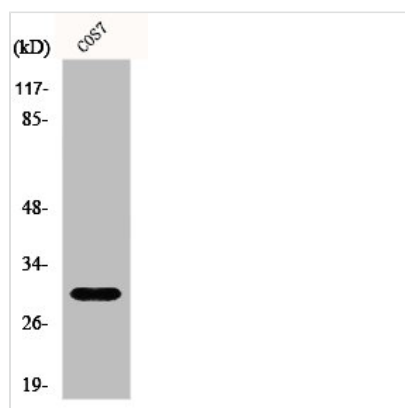




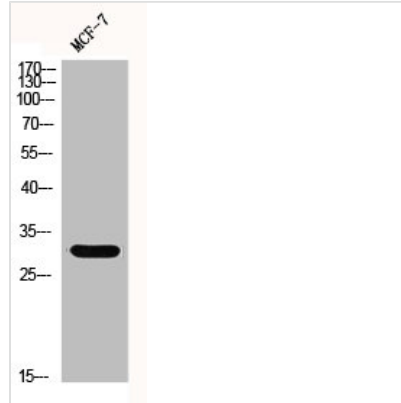
GCLM Antibody

Product Code	CSB-PA002667
Storage	Upon receipt, store at -20°C or -80°C. Avoid repeated freeze.
Uniprot No.	P48507
Immunogen	Synthesized peptide derived from the Internal region of Human GCSm-γ.
Raised In	Rabbit
Species Reactivity	Human,Mouse,Rat,Monkey
Tested Applications	WB, IHC, ELISA; WB:1:500-1:2000, IHC:1:100-1:300, ELISA:1:10000
Form	Liquid
Conjugate	Non-conjugated
Storage Buffer	Liquid in PBS containing 50% glycerol, 0.5% BSA and 0.02% sodium azide.
Purification Method	The antibody was affinity-purified from rabbit antiserum by affinity-chromatography using epitope-specific immunogen.
Isotype	IgG
Alias	GCLM; GLCLR; Glutamate--cysteine ligase regulatory subunit; GCS light chain; Gamma-ECS regulatory subunit; Gamma-glutamylcysteine synthetase regulatory subunit; Glutamate--cysteine ligase modifier subunit
Immunogen Species	Homo sapiens (Human)
Target Names	GCLM

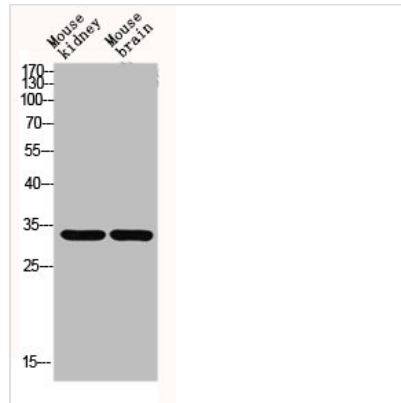
Image



Western Blot analysis of COS7 cells using GCSm-γ Polyclonal Antibody



Western Blot analysis of MCF-7 cells using GCSm- γ Polyclonal Antibody



Western blot analysis of Mouse-kidney mouse-brain lysis using GCSm- γ antibody.

Usage

For Research Use Only. Not for use in diagnostic or therapeutic procedures.