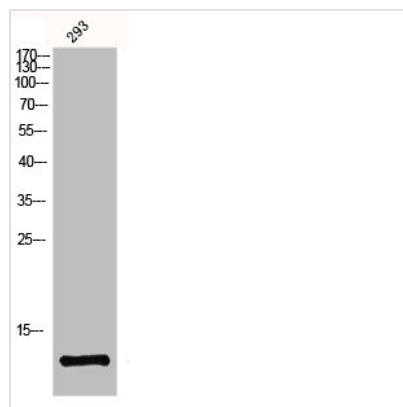




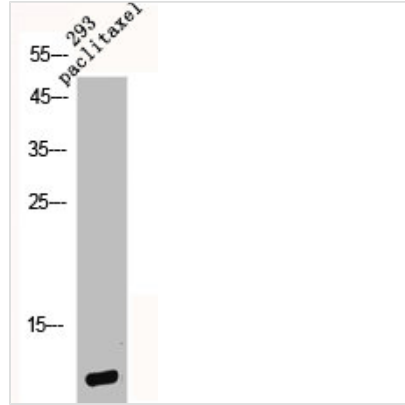
GHRL Antibody

Product Code	CSB-PA002677
Storage	Upon receipt, store at -20°C or -80°C. Avoid repeated freeze.
Uniprot No.	Q9UBU3
Immunogen	Synthesized peptide derived from the Internal region of Human Ghrelin.
Raised In	Rabbit
Species Reactivity	Human, Mouse, Rat
Tested Applications	WB, IHC, ELISA; WB:1:500-1:2000, IHC:1:100-1:300, ELISA:1:10000
Form	Liquid
Conjugate	Non-conjugated
Storage Buffer	Liquid in PBS containing 50% glycerol, 0.5% BSA and 0.02% sodium azide.
Purification Method	The antibody was affinity-purified from rabbit antiserum by affinity-chromatography using epitope-specific immunogen.
Isotype	IgG
Alias	GHRL; MTLRP; Appetite-regulating hormone; Growth hormone secretagogue; Growth hormone-releasing peptide; Motilin-related peptide; Protein M46
Immunogen Species	Homo sapiens (Human)
Target Names	GHRL

Image



Western Blot analysis of 293 cells using Ghrelin Polyclonal Antibody



Western Blot analysis of 293 cells using Ghrelin Polyclonal Antibody

Usage

For Research Use Only. Not for use in diagnostic or therapeutic procedures.