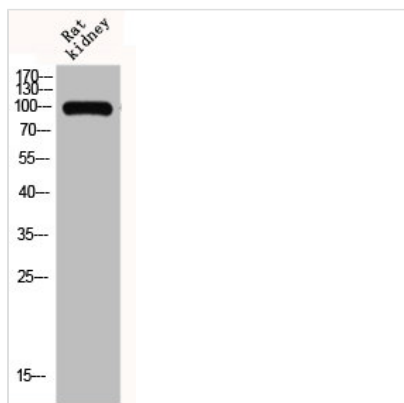




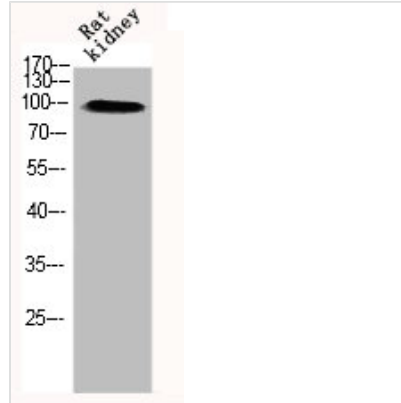
GRIA1 Antibody

Product Code	CSB-PA002724
Storage	Upon receipt, store at -20°C or -80°C. Avoid repeated freeze.
Uniprot No.	P42261
Immunogen	Synthesized peptide derived from Human GluR-1 around the non-phosphorylation site of S863.
Raised In	Rabbit
Species Reactivity	Human,Mouse,Rat,Monkey
Tested Applications	WB, IHC, IF, ELISA; WB:1:500-1:2000, IHC:1:100-1:300, IF:1:200-1:1000, ELISA:1:40000
Form	Liquid
Conjugate	Non-conjugated
Storage Buffer	Liquid in PBS containing 50% glycerol, 0.5% BSA and 0.02% sodium azide.
Purification Method	The antibody was affinity-purified from rabbit antiserum by affinity-chromatography using epitope-specific immunogen.
Isotype	IgG
Alias	GRIA1; GLUH1; GLUR1; Glutamate receptor 1; GluR-1; AMPA-selective glutamate receptor 1; GluR-A; GluR-K1; Glutamate receptor ionotropic; AMPA 1; GluA1
Immunogen Species	Homo sapiens (Human)
Target Names	GRIA1

Image



Western Blot analysis of RAT-KIDNEY cells using GluR-1 Polyclonal Antibody



Western Blot analysis of RAT-KIDNEY cells using GluR-1 Polyclonal Antibody

Usage

For Research Use Only. Not for use in diagnostic or therapeutic procedures.