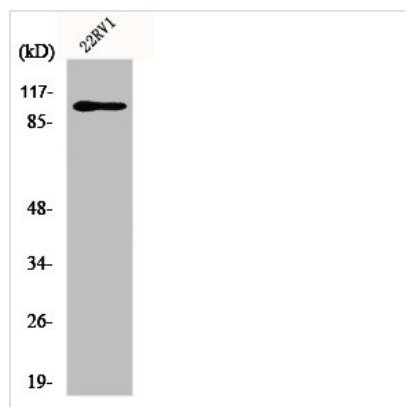




GRIA2 Antibody

Product Code	CSB-PA002727
Storage	Upon receipt, store at -20°C or -80°C. Avoid repeated freeze.
Uniprot No.	P42262
Immunogen	Synthesized peptide derived from Human GluR-2 around the non-phosphorylation site of S880.
Raised In	Rabbit
Species Reactivity	Human,Mouse,Rat
Tested Applications	WB, IHC, IF, ELISA; WB:1:500-1:2000, IHC:1:100-1:300, IF:1:200-1:1000, ELISA:1:20000
Form	Liquid
Conjugate	Non-conjugated
Storage Buffer	Liquid in PBS containing 50% glycerol, 0.5% BSA and 0.02% sodium azide.
Purification Method	The antibody was affinity-purified from rabbit antiserum by affinity-chromatography using epitope-specific immunogen.
Isotype	IgG
Alias	GRIA2; GLUR2; Glutamate receptor 2; GluR-2; AMPA-selective glutamate receptor 2; GluR-B; GluR-K2; Glutamate receptor ionotropic; AMPA 2; GluA2
Immunogen Species	Homo sapiens (Human)
Target Names	GRIA2

Image



Western Blot analysis of 22RV1 cells using GluR-2 Polyclonal Antibody

Usage For Research Use Only. Not for use in diagnostic or therapeutic procedures.