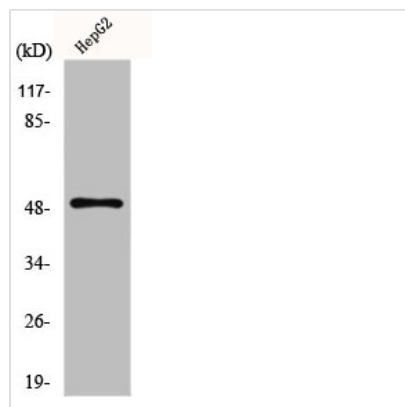




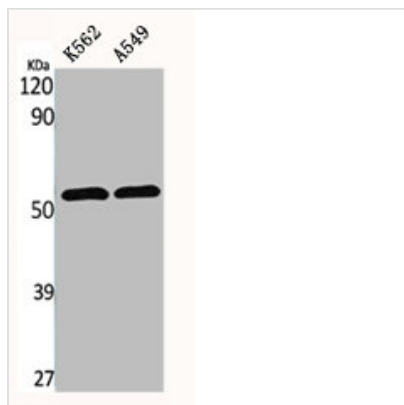
SLC2A4 Antibody

Product Code	CSB-PA002729
Storage	Upon receipt, store at -20°C or -80°C. Avoid repeated freeze.
Uniprot No.	P14672
Immunogen	Synthesized peptide derived from the Internal region of Human Glut4.
Raised In	Rabbit
Species Reactivity	Human, Mouse, Rat
Tested Applications	WB, IHC, ELISA; WB:1:500-1:2000, IHC:1:100-1:300, ELISA:1:40000
Form	Liquid
Conjugate	Non-conjugated
Storage Buffer	Liquid in PBS containing 50% glycerol, 0.5% BSA and 0.02% sodium azide.
Purification Method	The antibody was affinity-purified from rabbit antiserum by affinity-chromatography using epitope-specific immunogen.
Isotype	IgG
Alias	SLC2A4; GLUT4; Solute carrier family 2; facilitated glucose transporter member 4; Glucose transporter type 4, insulin-responsive; GLUT-4
Immunogen Species	Homo sapiens (Human)
Target Names	SLC2A4

Image



Western Blot analysis of HepG2 cells using Glut4 Polyclonal Antibody



Western Blot analysis of K562 A549 cells using
Glut4 Polyclonal Antibody

Usage

For Research Use Only. Not for use in diagnostic or therapeutic procedures.