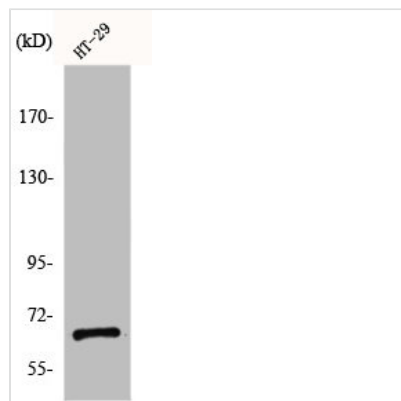




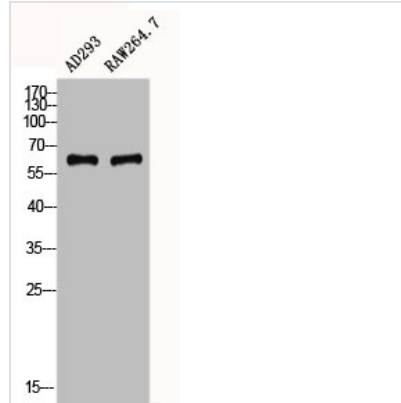
CYBB Antibody

Product Code	CSB-PA002737
Storage	Upon receipt, store at -20°C or -80°C. Avoid repeated freeze.
Uniprot No.	P04839
Immunogen	Synthesized peptide derived from the C-terminal region of Human gp91-phox.
Raised In	Rabbit
Species Reactivity	Human,Mouse,Rat
Tested Applications	WB, ELISA; WB:1:500-1:2000, ELISA:1:10000
Form	Liquid
Conjugate	Non-conjugated
Storage Buffer	Liquid in PBS containing 50% glycerol, 0.5% BSA and 0.02% sodium azide.
Purification Method	The antibody was affinity-purified from rabbit antiserum by affinity-chromatography using epitope-specific immunogen.
Isotype	IgG
Alias	AMCBX2 antibody; CGD antibody; CGD91-phox antibody; CY24B_HUMAN antibody; CYBB antibody; Cytochrome b 245; beta polypeptide antibody; Cytochrome b(558) beta chain antibody; Cytochrome b(558) subunit beta antibody; Cytochrome b-245 heavy chain antibody; Cytochrome b558 subunit beta antibody; GP91 PHOX antibody; gp91-1 antibody; gp91-phox antibody; GP91PHOX antibody; Heme-binding membrane glycoprotein gp91phox antibody; NADPH oxidase 2 antibody; Neutrophil cytochrome b 91 kDa polypeptide antibody; NOX2 antibody; p22 phagocyte B-cytochrome antibody; P91 PHOX antibody; p91-PHOX antibody; Superoxide-generating NADPH oxidase heavy chain subunit antibody
Immunogen Species	Homo sapiens (Human)
Target Names	CYBB

Image



Western Blot analysis of HT29 cells using gp91-phox Polyclonal Antibody



Western Blot analysis of AD293, RAW264.7 using gp91-phox Polyclonal Antibody

Usage

For Research Use Only. Not for use in diagnostic or therapeutic procedures.