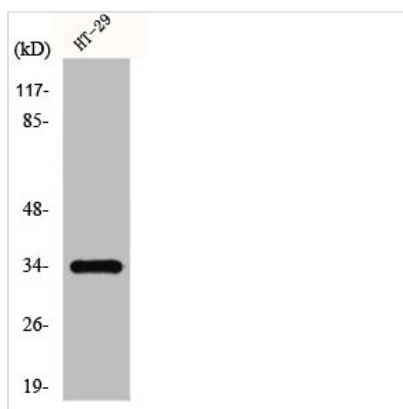




GPR18 Antibody

Product Code	CSB-PA002772
Storage	Upon receipt, store at -20°C or -80°C. Avoid repeated freeze.
Uniprot No.	Q14330
Immunogen	Synthesized peptide derived from the Internal region of Human GPR18.
Raised In	Rabbit
Species Reactivity	Human
Tested Applications	WB, IF, ELISA; WB:1:500-1:2000, IF:1:200-1:1000, ELISA:1:40000
Form	Liquid
Conjugate	Non-conjugated
Storage Buffer	Liquid in PBS containing 50% glycerol, 0.5% BSA and 0.02% sodium azide.
Purification Method	The antibody was affinity-purified from rabbit antiserum by affinity-chromatography using epitope-specific immunogen.
Isotype	IgG
Alias	GPR18; GPCRW; N-arachidonyl glycine receptor; NAGly receptor; G-protein coupled receptor 18
Immunogen Species	Homo sapiens (Human)
Target Names	GPR18

Image



Western Blot analysis of HT29 cells using GPR18 Polyclonal Antibody

Usage

For Research Use Only. Not for use in diagnostic or therapeutic procedures.